

For Research Use Only

CA11 Polyclonal antibody, PBS Only

Catalog Number:15435-1-PBS



Basic Information

Catalog Number:

15435-1-PBS

Size:

100ug , Concentration: 1 mg/ml by Nanodrop;

Source:

Rabbit

Isotype:

IgG

Immunogen Catalog Number:

AG7712

GenBank Accession Number:

BC002662

GeneID (NCBI):

770

UNIPROT ID:

O75493

Full Name:

carbonic anhydrase XI

Calculated MW:

36 kDa

Observed MW:

36, 45 kDa

Purification Method:

Antigen affinity purification

Applications

Tested Applications:

WB, IHC, Indirect ELISA

Species Specificity:

human, mouse, rat

Background Information

CA11(Carbonic anhydrase-related protein 11) is also named CARP2, and CARP XI and belongs to the alpha-carbonic anhydrase family. CARP XI is observed in the cerebellum, cerebrum, liver, stomach, small intestine, colon, kidney, and testis by immunohistochemical, and in the cerebellum, the most prominent signal is located in the Purkinje cells(PMID:20356370). CARP XI contains a hydrophobic N-terminal region for a possible signal sequence and asparagine glycosylation site and it plays a general role in the human central nervous system(PMID: 10350627).

Storage

Storage:

Store at -80°C.

Storage Buffer:

PBS only, pH7.3

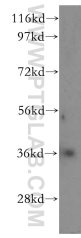
For technical support and original validation data for this product please contact:

T: 1 (888) 4PTGLAB (1-888-478-4522) (toll free in USA), or 1(312) 455-8498 (outside USA)

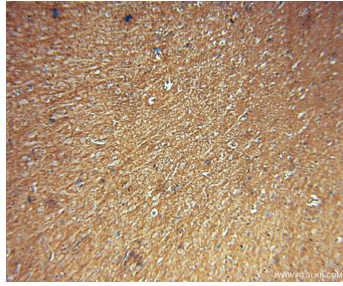
E: proteintech@ptglab.com
W: ptglab.com

This product is exclusively available under Proteintech Group brand and is not available to purchase from any other manufacturer.

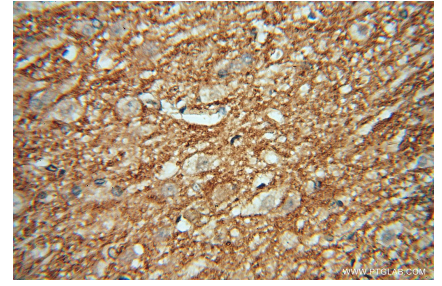
Selected Validation Data



human kidney tissue were subjected to SDS PAGE followed by western blot with 15435-1-AP (CA11 antibody) at dilution of 1:400 incubated at room temperature for 1.5 hours. This data was developed using the same antibody clone with 15435-1-PBS in a different storage buffer formulation.



Immunohistochemical analysis of paraffin-embedded human brain using 15435-1-AP (CA11 antibody) at dilution of 1:50 (under 10x lens). This data was developed using the same antibody clone with 15435-1-PBS in a different storage buffer formulation.



Immunohistochemical analysis of paraffin-embedded human brain using 15435-1-AP (CA11 antibody) at dilution of 1:50 (under 40x lens). This data was developed using the same antibody clone with 15435-1-PBS in a different storage buffer formulation.