

For Research Use Only

# EPB41L2 Polyclonal antibody

Catalog Number: 15437-1-AP



## Basic Information

### Catalog Number:

15437-1-AP

### Size:

150ul, Concentration: 700 ug/ml by Nanodrop;

### Source:

Rabbit

### Isotype:

IgG

### Immunogen Catalog Number:

AG3647

### GenBank Accession Number:

BC034718

### GeneID (NCBI):

2037

### UNIPROT ID:

O43491

### Full Name:

erythrocyte membrane protein band 4.1-like 2

### Calculated MW:

112 kDa

### Observed MW:

130-150 kDa

### Purification Method:

Antigen affinity purification

### Recommended Dilutions:

WB 1:500-1:1000

IP 0.5-4.0 ug for 1.0-3.0 mg of total protein lysate

IHC 1:250-1:1000

IF/ICC 1:50-1:500

## Applications

### Tested Applications:

WB, IHC, IF/ICC, IP, ELISA

### Species Specificity:

human, mouse, rat

**Note-IHC: suggested antigen retrieval with TE buffer pH 9.0; (\*) Alternatively, antigen retrieval may be performed with citrate buffer pH 6.0**

### Positive Controls:

WB : HeLa cells, Jurkat cells

IP : HEK-293 cells,

IHC : human ovary tumor tissue,

IF/ICC : A431 cells, HeLa cells

## Background Information

EPB41L2, also known as 4.1G, is a member of the protein 4.1 family, which generally serves as adaptors linking transmembrane proteins to the cytoskeleton(PMID: 21482674).

## Storage

### Storage:

Store at -20°C. Stable for one year after shipment.

### Storage Buffer:

PBS with 0.02% sodium azide and 50% glycerol pH 7.3.

Aliquoting is unnecessary for -20°C storage

\*\*\* 20ul sizes contain 0.1% BSA

For technical support and original validation data for this product please contact:

T: 1 (888) 4PTGLAB (1-888-478-4522) (toll free in USA), or 1(312) 455-8498 (outside USA)

E: [proteintech@ptglab.com](mailto:proteintech@ptglab.com)

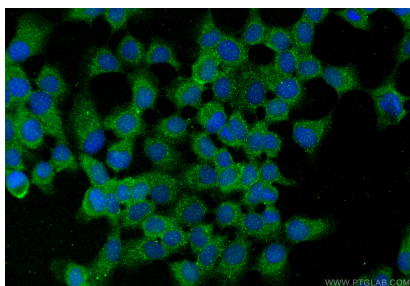
W: [ptglab.com](http://ptglab.com)

This product is exclusively available under Proteintech Group brand and is not available to purchase from any other manufacturer.

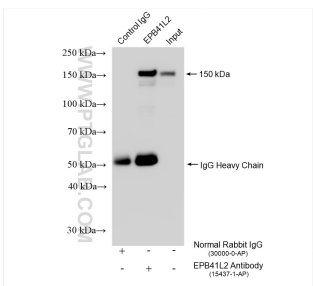
Selected Validation Data



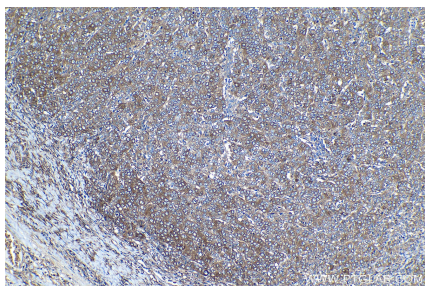
HeLa cells were subjected to SDS PAGE followed by western blot with 15437-1-AP (EPB41L2 antibody) at dilution of 1:800 incubated at room temperature for 1.5 hours.



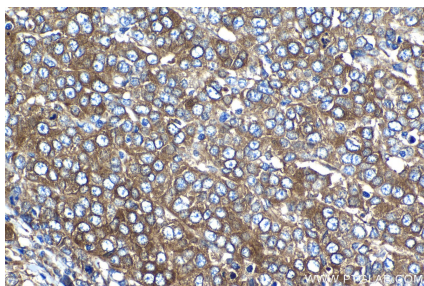
Immunofluorescent analysis of (-20°C Methanol) fixed A431 cells using EPB41L2 antibody (15437-1-AP) at dilution of 1:200 and Multi-rAb CoraLite® Plus 488-Goat Anti-Rabbit Recombinant Secondary Antibody (H+L) (RGAR002).



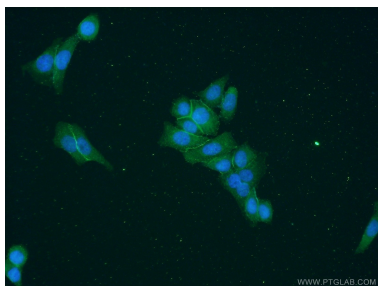
IP result of anti-EPB41L2 (IP:15437-1-AP, 4ug; Detection:15437-1-AP 1:4000) with HEK-293 cells lysate 1610 ug.



Immunohistochemical analysis of paraffin-embedded human ovary tumor tissue slide using 15437-1-AP (EPB41L2 antibody) at dilution of 1:500 (under 10x lens). Heat mediated antigen retrieval with Tris-EDTA buffer (pH 9.0).



Immunohistochemical analysis of paraffin-embedded human ovary tumor tissue slide using 15437-1-AP (EPB41L2 antibody) at dilution of 1:500 (under 40x lens). Heat mediated antigen retrieval with Tris-EDTA buffer (pH 9.0).



Immunofluorescent analysis of HeLa cells using 15437-1-AP (EPB41L2 antibody) at dilution of 1:50 and Alexa Fluor 488-conjugated AffiniPure Goat Anti-Rabbit IgG(H+L).