

For Research Use Only

# EPB41L2 Polyclonal antibody, PBS Only

Catalog Number: 15437-1-PBS



## Basic Information

**Catalog Number:**

15437-1-PBS

**Size:**

100ug , Concentration: 1 mg/ml by Nanodrop;

**Source:**

Rabbit

**Isotype:**

IgG

**Immunogen Catalog Number:**

AG3647

**GenBank Accession Number:**

BC034718

**GeneID (NCBI):**

2037

**UNIPROT ID:**

O43491

**Full Name:**

erythrocyte membrane protein band 4.1-like 2

**Calculated MW:**

112 kDa

**Observed MW:**

130-150 kDa

**Purification Method:**

Antigen affinity purification

## Applications

**Tested Applications:**

WB, IHC, IF/ICC, IP, Indirect ELISA

**Species Specificity:**

human, mouse, rat

## Background Information

EPB41L2, also known as 4.1G, is a member of the protein 4.1 family, which generally serves as adaptors linking transmembrane proteins to the cytoskeleton(PMID: 21482674).

## Storage

**Storage:**

Store at -80°C.

**Storage Buffer:**

PBS Only

For technical support and original validation data for this product please contact:

T: 1 (888) 4PTGLAB (1-888-478-4522) (toll free in USA), or 1(312) 455-8498 (outside USA)

E: [proteintech@ptglab.com](mailto:proteintech@ptglab.com)

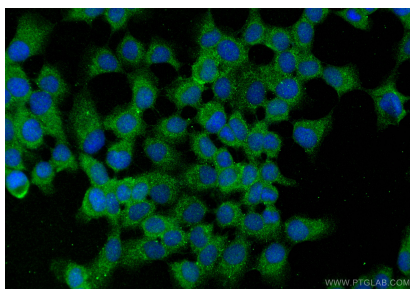
W: [ptglab.com](http://ptglab.com)

This product is exclusively available under Proteintech Group brand and is not available to purchase from any other manufacturer.

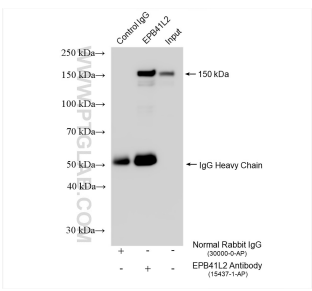
Selected Validation Data



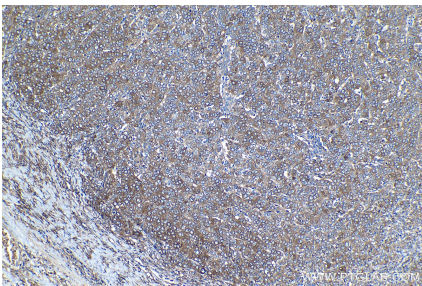
HeLa cells were subjected to SDS PAGE followed by western blot with 15437-1-AP (EPB41L2 antibody) at dilution of 1:800 incubated at room temperature for 1.5 hours. This data was developed using the same antibody clone with 15437-1-PBS in a different storage buffer formulation.



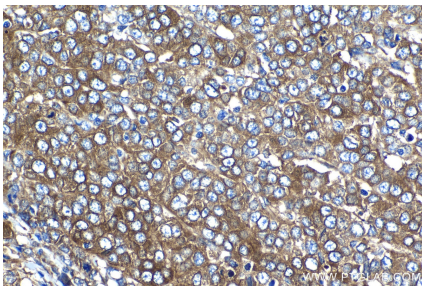
Immunofluorescent analysis of (-20°C Methanol) fixed A431 cells using EPB41L2 antibody (15437-1-AP) at dilution of 1:200 and Multi-rAb CoraLite® Plus 488-Goat Anti-Rabbit Recombinant Secondary Antibody (H+L) (RGAR002). This data was developed using the same antibody clone with 15437-1-PBS in a different storage buffer formulation.



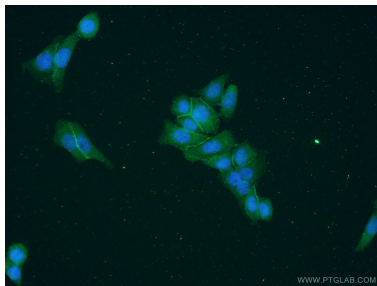
IP result of anti-EPB41L2 (IP:15437-1-AP, 4ug; Detection:15437-1-AP 1:4000) with HEK-293 cells lysate 1610 ug. This data was developed using the same antibody clone with 15437-1-PBS in a different storage buffer formulation.



Immunohistochemical analysis of paraffin-embedded human ovary tumor tissue slide using 15437-1-AP (EPB41L2 antibody) at dilution of 1:500 (under 10x lens). Heat mediated antigen retrieval with Tris-EDTA buffer (pH 9.0). This data was developed using the same antibody clone with 15437-1-PBS in a different storage buffer formulation.



Immunohistochemical analysis of paraffin-embedded human ovary tumor tissue slide using 15437-1-AP (EPB41L2 antibody) at dilution of 1:500 (under 40x lens). Heat mediated antigen retrieval with Tris-EDTA buffer (pH 9.0). This data was developed using the same antibody clone with 15437-1-PBS in a different storage buffer formulation.



Immunofluorescent analysis of HeLa cells using 15437-1-AP (EPB41L2 antibody) at dilution of 1:50 and Alexa Fluor 488-conjugated AffiniPure Goat Anti-Rabbit IgG(H+L). This data was developed using the same antibody clone with 15437-1-PBS in a different storage buffer formulation.