

For Research Use Only

GMDS Polyclonal antibody

Catalog Number: 15442-1-AP

4 Publications



Basic Information

Catalog Number:

15442-1-AP

Size:

150ul, Concentration: 500 ug/ml by Nanodrop and 267 ug/ml by Bradford method using BSA as the standard;

Source:

Rabbit

Isotype:

IgG

Immunogen Catalog Number:

AG7319

GenBank Accession Number:

BC000117

GeneID (NCBI):

2762

UNIPROT ID:

O60547

Full Name:

GDP-mannose 4,6-dehydratase

Calculated MW:

42 kDa

Observed MW:

40-42 kDa

Purification Method:

Antigen affinity purification

Recommended Dilutions:

WB 1:500-1:3000

IHC 1:500-1:2000

IF/ICC 1:200-1:800

Applications

Tested Applications:

WB, IHC, IF/ICC, ELISA

Cited Applications:

WB, IP

Species Specificity:

human, mouse, rat

Cited Species:

human

Positive Controls:

WB : mouse pancreas tissue, HeLa cells, rat spleen tissue, rat pancreas tissue

IHC : human pancreas cancer tissue, human colon cancer tissue, human lung cancer tissue, human lymphoma tissue

IF/ICC : HeLa cells,

Note-IHC: suggested antigen retrieval with TE buffer pH 9.0; (*) Alternatively, antigen retrieval may be performed with citrate buffer pH 6.0

Background Information

GDP-D-mannose-4,6-dehydratase (GMDS) is the key enzyme in the 'de novo' pathway of GDP-L-fucose biosynthesis(PMID:10462046). The enzyme is also named as GMD and belongs to the GDP-mannose 4,6-dehydratase family. The gene encodes a 42 kDa protein that catalyzes the conversion of GDP-mannose to GDP-4-keto-6-deoxymannose, the first step in the synthesis of GDP-fucose from GDP-mannose, using NADP⁺ as a cofactor.

Notable Publications

Author	Pubmed ID	Journal	Application
Yasuhiko Kizuka	27447047	Cell Chem Biol	WB
Lilli Saarinen	33503764	Mol Cell Proteomics	WB
Lilli Saarinen	30072579	Mol Cell Proteomics	WB

Storage

Storage:

Store at -20°C. Stable for one year after shipment.

Storage Buffer:

PBS with 0.02% sodium azide and 50% glycerol pH 7.3.

Aliquoting is unnecessary for -20°C storage

*** 20ul sizes contain 0.1% BSA

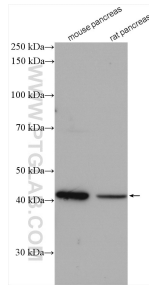
For technical support and original validation data for this product please contact:

T: 1 (888) 4PTGLAB (1-888-478-4522) (toll free in USA), or 1(312) 455-8498 (outside USA)

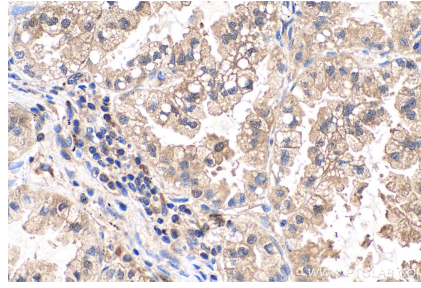
E: proteintech@ptglab.com
W: ptglab.com

This product is exclusively available under Proteintech Group brand and is not available to purchase from any other manufacturer.

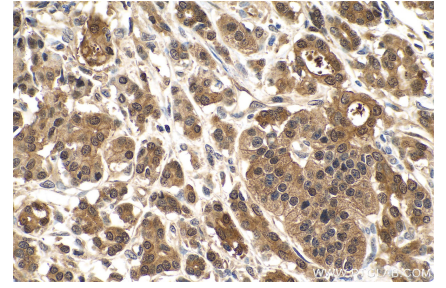
Selected Validation Data



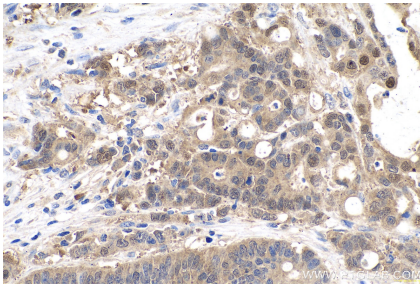
Various lysates were subjected to SDS PAGE followed by western blot with 15442-1-AP (GMDS antibody) at dilution of 1:1500 incubated at room temperature for 1.5 hours.



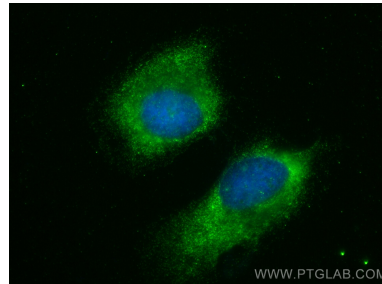
Immunohistochemical analysis of paraffin-embedded human lung cancer tissue slide using 15442-1-AP (GMDS antibody) at dilution of 1:1000 (under 40x lens). Heat mediated antigen retrieval with Tris-EDTA buffer (pH 9.0).



Immunohistochemical analysis of paraffin-embedded human pancreas cancer tissue slide using 15442-1-AP (GMDS antibody) at dilution of 1:1000 (under 40x lens). Heat mediated antigen retrieval with Tris-EDTA buffer (pH 9.0).



Immunohistochemical analysis of paraffin-embedded human colon cancer tissue slide using 15442-1-AP (GMDS antibody) at dilution of 1:2000 (under 40x lens). Heat mediated antigen retrieval with Tris-EDTA buffer (pH 9.0).



Immunofluorescent analysis of (-20°C Ethanol) fixed HeLa cells using GMDS antibody (15442-1-AP) at dilution of 1:400 and Coralite®488-Conjugated Goat Anti-Rabbit IgG(H+L) (SA00013-2).