

For Research Use Only

S100A2 Polyclonal antibody

Catalog Number: 15454-1-AP



Basic Information

Catalog Number: 15454-1-AP	GenBank Accession Number: BC002829	Purification Method: Antigen affinity purification
Size: 150ul , Concentration: 500 ug/ml by Nanodrop;	GeneID (NCBI): 6273	Recommended Dilutions: WB 1:500-1:1000
Source: Rabbit	UNIPROT ID: P29034	IHC 1:50-1:500
Isotype: IgG	Full Name: S100 calcium binding protein A2	IF/ICC 1:200-1:800
Immunogen Catalog Number: AG7719	Calculated MW: 11 kDa	
	Observed MW: 10 kDa	

Applications

Tested Applications: WB, IHC, IF/ICC, ELISA	Positive Controls:
Species Specificity: human	WB : HaCaT cells, HeLa cells
Note-IHC: suggested antigen retrieval with TE buffer pH 9.0; (*) Alternatively, antigen retrieval may be performed with citrate buffer pH 6.0	IHC : human bowen disease,
	IF/ICC : A431 cells,

Background Information

S100A2 (S100 calcium-binding protein A2) is also named as S100L and CAN19. S100A2, a member of the S100 protein family, is more highly expressed in endometrial carcinoma tissues than in normal tissues and was correlated with worse survival (PMID: 35042454). S100A2 has a tumor suppressor function. S100A2 is highly upregulated in the epidermis under inflammatory conditions and in drug eruptions, in addition to inflammatory skin diseases such as atopic dermatitis and psoriasis (PMID: 35885660).

Storage

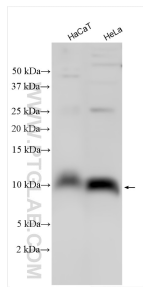
Storage:
Store at -20°C. Stable for one year after shipment.
Storage Buffer:
PBS with 0.02% sodium azide and 50% glycerol pH 7.3.
Aliquoting is unnecessary for -20°C storage

*** 20ul sizes contain 0.1% BSA

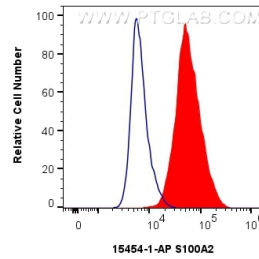
For technical support and original validation data for this product please contact:
T: 1 (888) 4PTGLAB (1-888-478-4522) (toll free in USA), or 1(312) 455-8498 (outside USA)
E: proteintech@ptglab.com
W: ptglab.com

This product is exclusively available under Proteintech Group brand and is not available to purchase from any other manufacturer.

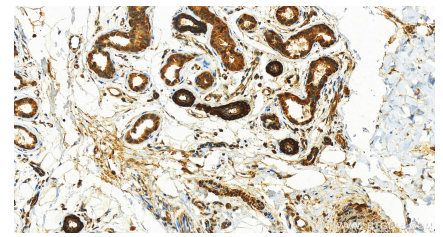
Selected Validation Data



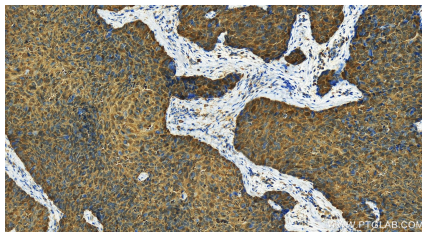
Various lysates were subjected to SDS PAGE followed by western blot with 15454-1-AP (S100A2 antibody) at dilution of 1:600 incubated at room temperature for 1.5 hours.



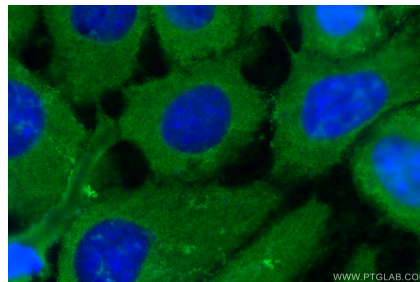
1x10⁶ A431 cells were intracellularly stained with 0.4 ug S100A2 Polyclonal antibody (15454-1-AP) and CoraLite® 488-Conjugated AffiniPure Goat Anti-Rabbit IgG(H+L) (SA00013-2)(red), or 0.4 ug Rabbit IgG control Rabbit PolyAb (30000-O-AP) (blue). Cells were fixed with 4% PFA and permeabilized with Flow Cytometry Perm Buffer (PF00011-C).



Immunohistochemical analysis of paraffin-embedded human Bowen disease slide using 15454-1-AP (S100A2 antibody) at dilution of 1:200 (under 20x lens). Heat mediated antigen retrieval with Tris-EDTA buffer (pH 9.0).



Immunohistochemical analysis of paraffin-embedded human Bowen disease slide using 15454-1-AP (S100A2 antibody) at dilution of 1:200 (under 20x lens). Heat mediated antigen retrieval with Tris-EDTA buffer (pH 9.0).



Immunofluorescent analysis of (-20°C Methanol) fixed A431 cells using S100A2 antibody (15454-1-AP) at dilution of 1:400 and CoraLite® 488-Conjugated AffiniPure Goat Anti-Rabbit IgG(H+L) (SA00013-2).