

For Research Use Only

RPP25 Polyclonal antibody

Catalog Number: 15461-1-AP

1 Publications



Basic Information

Catalog Number:

15461-1-AP

Size:

150ul, Concentration: 350 ug/ml by Nanodrop and 253 ug/ml by Bradford method using BSA as the standard;

Source:

Rabbit

Isotype:

IgG

Immunogen Catalog Number:

AG7742

GenBank Accession Number:

BC002497

GeneID (NCBI):

54913

UNIPROT ID:

Q9BUL9

Full Name:

ribonuclease P/MRP 25kDa subunit

Calculated MW:

21 kDa

Observed MW:

25 kDa

Purification Method:

Antigen affinity purification

Recommended Dilutions:

WB 1:200-1:1000

IP 0.5-4.0 ug for 1.0-3.0 mg of total protein lysate

IHC 1:20-1:200

IF/ICC 1:50-1:500

Applications

Tested Applications:

WB, IHC, IF/ICC, IP, ELISA

Cited Applications:

WB

Species Specificity:

human, mouse, rat

Cited Species:

human

Note-IHC: suggested antigen retrieval with TE buffer pH 9.0; (*) Alternatively, antigen retrieval may be performed with citrate buffer pH 6.0

Positive Controls:

WB : HeLa cells, MCF-7 cells

IP : HeLa cells,

IHC : human small intestine tissue, human cervical cancer tissue

IF/ICC : HeLa cells,

Background Information

Ribonuclease P protein subunit p25(RPP25) is a component of ribonuclease P, which is a protein complex that generates mature tRNA molecular by cleaving their 5'-ends. It belongs to histone-like Alba family, also a component of RNase MRP. This subunit binds to RNA.

Notable Publications

Author	Pubmed ID	Journal	Application
Ok Hyun Park	30930054	Mol Cell	WB

Storage

Storage:

Store at -20°C. Stable for one year after shipment.

Storage Buffer:

PBS with 0.02% sodium azide and 50% glycerol pH 7.3.

Aliquoting is unnecessary for -20°C storage

*** 20ul sizes contain 0.1% BSA

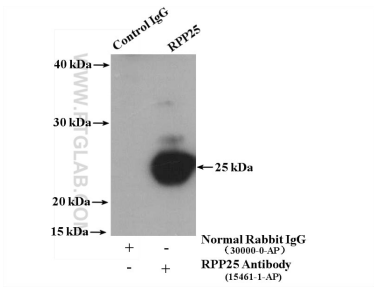
For technical support and original validation data for this product please contact:

T: 1 (888) 4PTGLAB (1-888-478-4522) (toll free in USA), or 1(312) 455-8498 (outside USA)

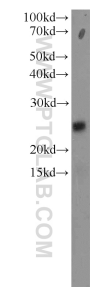
E: proteintech@ptglab.com
W: ptglab.com

This product is exclusively available under Proteintech Group brand and is not available to purchase from any other manufacturer.

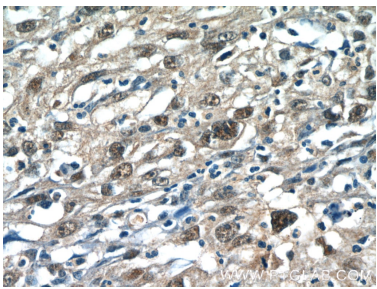
Selected Validation Data



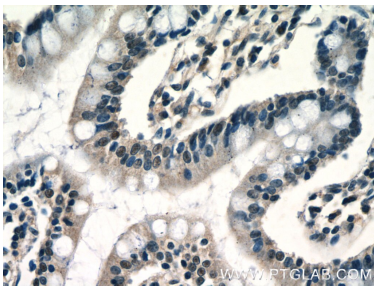
IP result of anti-RPP25 (IP:15461-1-AP, 4ug; Detection:15461-1-AP 1:300) with HeLa cells lysate 2800 ug.



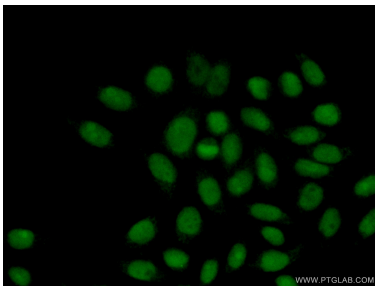
HeLa cells were subjected to SDS PAGE followed by western blot with 15461-1-AP (RPP25 antibody) at dilution of 1:300 incubated at room temperature for 1.5 hours.



Immunohistochemical analysis of paraffin-embedded human cervical cancer tissue slide using 15461-1-AP (RPP25 Antibody) at dilution of 1:50 (under 40x lens).



Immunohistochemical analysis of paraffin-embedded human small intestine tissue slide using 15461-1-AP (RPP25 Antibody) at dilution of 1:50 (under 40x lens).



Immunofluorescent analysis of (10% Formaldehyde) fixed HeLa cells using 15461-1-AP (RPP25 antibody) at dilution of 1:50 and Alexa Fluor 488-conjugated Goat Anti-Rabbit IgG(H+L).