

For Research Use Only

MDH2 Polyclonal antibody

Catalog Number: 15462-1-AP

23 Publications



Basic Information

Catalog Number:

15462-1-AP

Size:

150ul, Concentration: 400 ug/ml by Nanodrop;

Source:

Rabbit

Isotype:

IgG

Immunogen Catalog Number:

AG7750

GenBank Accession Number:

BC001917

GeneID (NCBI):

4191

UNIPROT ID:

P40926

Full Name:

malate dehydrogenase 2, NAD (mitochondrial)

Calculated MW:

36 kDa

Observed MW:

33 kDa

Purification Method:

Antigen affinity purification

Recommended Dilutions:

WB 1:1000-1:8000

IP 0.5-4.0 ug for 1.0-3.0 mg of total protein lysate

IHC 1:200-1:1000

Applications

Tested Applications:

WB, IHC, IP, ELISA

Cited Applications:

WB, IP

Species Specificity:

human, mouse, rat

Cited Species:

human, mouse, caenorhabditis elegans

Note-IHC: suggested antigen retrieval with TE buffer pH 9.0; (*) Alternatively, antigen retrieval may be performed with citrate buffer pH 6.0

Positive Controls:

WB: HeLa cells, mouse lung tissue, rat lung tissue, HepG2 cells

IP: mouse lung tissue,

IHC: human liver cancer tissue, human lung cancer tissue

Background Information

MDH2 encodes the Krebs cycle enzyme mitochondrial malate dehydrogenase, which catalyzes the reversible oxidation of malate to oxaloacetate and plays a role in the malate-aspartate NADH shuttle. Mutations in MDH2 Cause Developmental and epileptic encephalopathy 51 (PMID: 27989324).

Notable Publications

Author	Pubmed ID	Journal	Application
Olga Zurita Rendón	30061372	Mol Cell Biol	
Yongyan Sun	30307357	Int J Radiat Biol	WB
Minghao Yuan	36186135	Aging Dis	WB

Storage

Storage:

Store at -20°C. Stable for one year after shipment.

Storage Buffer:

PBS with 0.02% sodium azide and 50% glycerol pH 7.3.

Aliquoting is unnecessary for -20°C storage

*** 20ul sizes contain 0.1% BSA

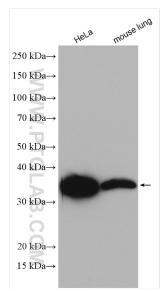
For technical support and original validation data for this product please contact:

T: 1 (888) 4PTGLAB (1-888-478-4522) (toll free in USA), or 1(312) 455-8498 (outside USA)

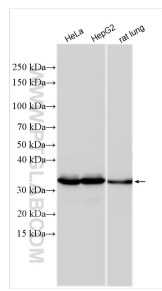
E: proteintech@ptglab.com
W: ptglab.com

This product is exclusively available under Proteintech Group brand and is not available to purchase from any other manufacturer.

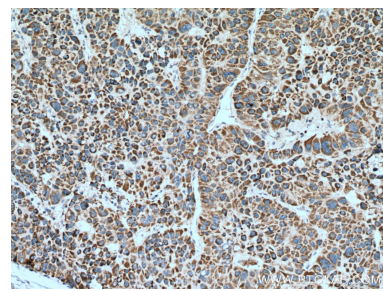
Selected Validation Data



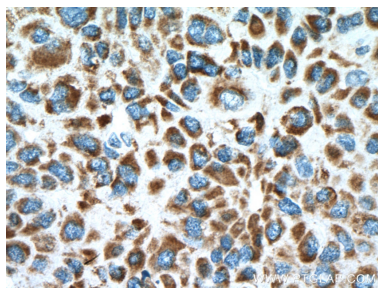
Various lysates were subjected to SDS PAGE followed by western blot with 15462-1-AP (MDH2 antibody) at dilution of 1:1000 incubated at room temperature for 1.5 hours.



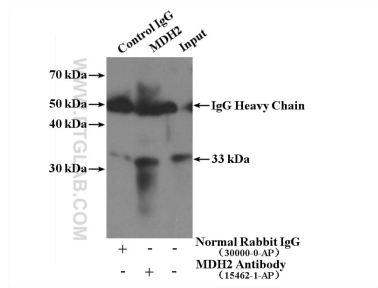
Various lysates were subjected to SDS PAGE followed by western blot with 15462-1-AP (MDH2 antibody) at dilution of 1:4000 incubated at room temperature for 1.5 hours.



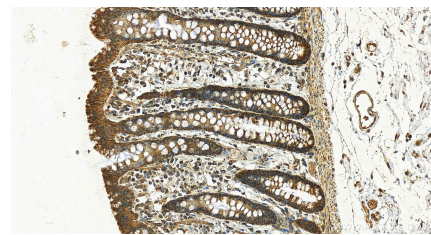
Immunohistochemical analysis of paraffin-embedded human liver cancer tissue slide using 15462-1-AP (MDH2 antibody) at dilution of 1:200 (under 10x lens). Heat mediated antigen retrieval with Tris-EDTA buffer (pH 9.0).



Immunohistochemical analysis of paraffin-embedded human liver cancer tissue slide using 15462-1-AP (MDH2 antibody) at dilution of 1:200 (under 40x lens). Heat mediated antigen retrieval with Tris-EDTA buffer (pH 9.0).



IP result of anti-MDH2 (IP:15462-1-AP, 4ug; Detection:15462-1-AP 1:300) with mouse lung tissue lysate 3600ug.



Immunohistochemical analysis of paraffin-embedded human normal colon slide using 15462-1-AP (MDH2 antibody) at dilution of 1:200 (under 20x lens). Heat mediated antigen retrieval with Tris-EDTA buffer (pH 9.0).