

For Research Use Only

SIN1/MAPKAP1 Polyclonal antibody

Catalog Number: 15463-1-AP

10 Publications



Basic Information

Catalog Number:

15463-1-AP

Size:

150ul, Concentration: 600 ug/ml by Nanodrop;

Source:

Rabbit

Isotype:

IgG

Immunogen Catalog Number:

AG7753

GenBank Accession Number:

BC002326

GeneID (NCBI):

79109

UNIPROT ID:

Q9BPZ7

Full Name:

mitogen-activated protein kinase associated protein 1

Calculated MW:

59 kDa

Observed MW:

65 kDa

Purification Method:

Antigen affinity purification

Recommended Dilutions:

WB 1:500-1:2000

IP 0.5-4.0 ug for 1.0-3.0 mg of total protein lysate

IHC 1:50-1:500

IF/ICC 1:200-1:800

Applications

Tested Applications:

WB, IHC, IF/ICC, IP, ELISA

Cited Applications:

WB, IHC, IF

Species Specificity:

human, mouse, rat

Cited Species:

human, mouse, chicken

Note-IHC: suggested antigen retrieval with TE buffer pH 9.0; (*) Alternatively, antigen retrieval may be performed with citrate buffer pH 6.0

Positive Controls:

WB: mouse kidney tissue, HeLa cells

IP: mouse kidney tissue,

IHC: mouse kidney tissue, human kidney tissue

IF/ICC: HepG2 cells,

Notable Publications

Author	Pubmed ID	Journal	Application
Qing Dai	36302989	Nat Biotechnol	WB
Joanna R Kovalski	30639242	Mol Cell	WB
Sumaya Hamadmad	39916387	Glia	IF

Storage

Storage:

Store at -20°C. Stable for one year after shipment.

Storage Buffer:

PBS with 0.02% sodium azide and 50% glycerol, pH7.3

Aliquoting is unnecessary for -20°C storage

*** 20ul sizes contain 0.1% BSA

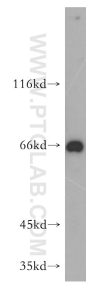
For technical support and original validation data for this product please contact:

T: 1 (888) 4PTGLAB (1-888-478-4522) (toll free in USA), or 1(312) 455-8498 (outside USA)

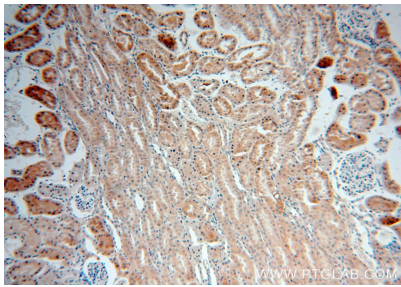
E: proteintech@ptglab.com
W: ptglab.com

This product is exclusively available under Proteintech Group brand and is not available to purchase from any other manufacturer.

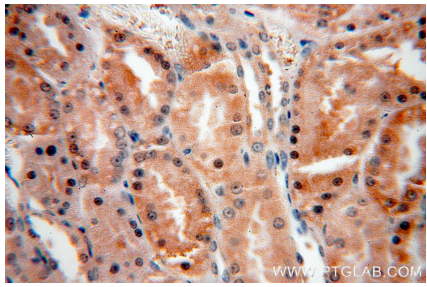
Selected Validation Data



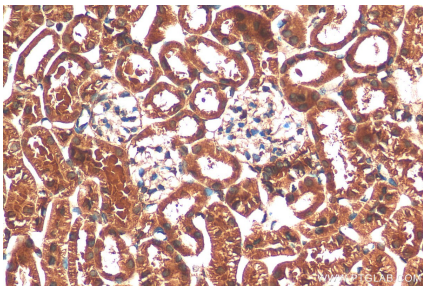
mouse kidney tissue were subjected to SDS PAGE followed by western blot with 15463-1-AP (MAPKAP1 antibody) at dilution of 1:500 incubated at room temperature for 1.5 hours.



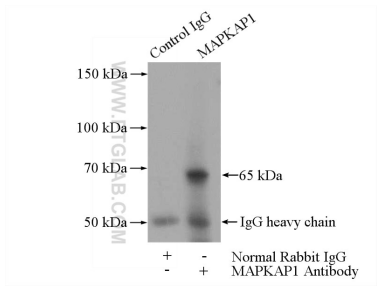
Immunohistochemical analysis of paraffin-embedded human kidney using 15463-1-AP (MAPKAP1 antibody) at dilution of 1:100 (under 10x lens).



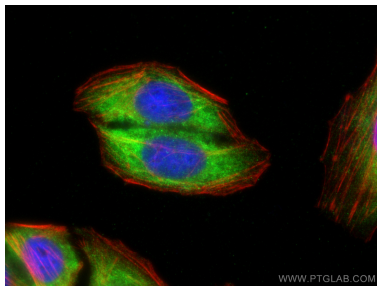
Immunohistochemical analysis of paraffin-embedded human kidney using 15463-1-AP (MAPKAP1 antibody) at dilution of 1:100 (under 40x lens).



Immunohistochemical analysis of paraffin-embedded mouse kidney tissue slide using 15463-1-AP (SIN1 antibody) at dilution of 1:200 (under 40x lens).



IP result of anti-SIN1 (IP:15463-1-AP, 4ug; Detection:15463-1-AP 1:500) with mouse kidney tissue lysate 4000ug.



Immunofluorescent analysis of (-20°C Ethanol) fixed HepG2 cells using SIN1 antibody (15463-1-AP) at dilution of 1:400 and CoraLite®488-Conjugated AffiniPure Goat Anti-Rabbit IgG(H+L), CL594-phalloidin (red).