

For Research Use Only

UBE2D1/2/3/4 Polyclonal antibody



Catalog Number: 15475-1-AP

Featured Product

2 Publications

Basic Information

Catalog Number: 15475-1-AP	GenBank Accession Number: BC004104	Purification Method: Antigen affinity purification
Size: 150ul , Concentration: 400 µg/ml by Nanodrop and 247 µg/ml by Bradford method using BSA as the standard;	GeneID (NCBI): 51619	Recommended Dilutions: WB 1:500-1:3000 IHC 1:200-1:800
Source: Rabbit	Full Name: ubiquitin-conjugating enzyme E2D 4 (putative)	
Isotype: IgG	Calculated MW: 17 kDa	
Immunogen Catalog Number: AG7779	Observed MW: 17 kDa	

Applications

Tested Applications:
IHC, WB, ELISA

Cited Applications:
CoIP, WB

Species Specificity:
human, mouse, rat

Cited Species:
human, rat

Note-IHC: suggested antigen retrieval with TE buffer pH 9.0; (*) Alternatively, antigen retrieval may be performed with citrate buffer pH 6.0

Positive Controls:

WB: mouse brain tissue, human testis tissue, rat brain tissue

IHC: human breast cancer tissue,

Background Information

Ubiquitination is a post-translational modification pathway or is part of the specific protein-degradation pathway by the 26S proteasome. Ubiquitination of a target protein involves multistep enzymatic reaction catalyzed by a cascade of enzymes including Ub-activating enzymes (E1s), Ub-conjugating enzymes (E2s) and Ub ligases (E3s) (PMID: 23542885). UBE2D family, which has 4 members named as UBE2D1/2/3/4, is an E2 ubiquitin-conjugating enzyme family in the ubiquitin-proteasome system. This antibody can recognize all the four members of UBE2D due to the high homology.

Notable Publications

Author	Pubmed ID	Journal	Application
Honghu Xie	34743754	Infect Agent Cancer	WB, CoIP
Yng-Tay Chen	38152866	Environ Toxicol	WB

Storage

Storage:

Store at -20°C. Stable for one year after shipment.

Storage Buffer:

PBS with 0.02% sodium azide and 50% glycerol pH 7.3.

Aliquoting is unnecessary for -20°C storage

*** 20ul sizes contain 0.1% BSA

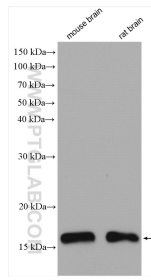
For technical support and original validation data for this product please contact:

T: 1 (888) 4PTGLAB (1-888-478-4522) (toll free in USA), or 1(312) 455-8498 (outside USA)

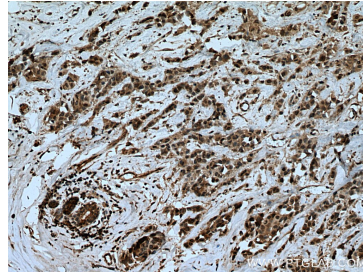
E: proteintech@ptglab.com
W: ptglab.com

This product is exclusively available under Proteintech Group brand and is not available to purchase from any other manufacturer.

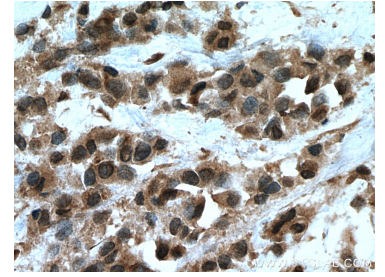
Selected Validation Data



mouse brain tissue were subjected to SDS PAGE followed by western blot with 15475-1-AP (UBE2D4 antibody) at dilution of 1:1500 incubated at room temperature for 1.5 hours.



Immunohistochemical analysis of paraffin-embedded human breast cancer tissue slide using 15475-1-AP (UBE2D1/2/3/4 antibody) at dilution of 1:400 (under 10x lens). Heat mediated antigen retrieval with Tris-EDTA buffer (pH 9.0).



Immunohistochemical analysis of paraffin-embedded human breast cancer tissue slide using 15475-1-AP (UBE2D1/2/3/4 antibody) at dilution of 1:400 (under 40x lens). Heat mediated antigen retrieval with Tris-EDTA buffer (pH 9.0).