

For Research Use Only

NAT6/FUS2 Polyclonal antibody

Catalog Number: 15476-1-AP

Featured Product

2 Publications



Basic Information

Catalog Number:

15476-1-AP

Size:

150ul, Concentration: 600 ug/ml by Nanodrop;

Source:

Rabbit

Isotype:

IgG

Immunogen Catalog Number:

AG7780

GenBank Accession Number:

BC004483

GeneID (NCBI):

24142

UNIPROT ID:

Q93015

Full Name:

N-acetyltransferase 6 (GCN5-related)

Calculated MW:

31 kDa

Observed MW:

45 kDa

Purification Method:

Antigen affinity purification

Recommended Dilutions:

WB 1:500-1:2000

IF/ICC 1:200-1:800

Applications

Tested Applications:

WB, IF/ICC, ELISA

Cited Applications:

WB, IF

Species Specificity:

human

Cited Species:

human

Positive Controls:

WB : HeLa cells,

IF/ICC : HeLa cells,

Background Information

The acetyltransferase NAT6 (also known as Fus2) is an enzyme that catalyzes the transfer of acetyl groups from acetyl-CoA to acrylamines and located mainly in the cytoplasm. NAT6 has two isoforms. The molecular weight of NAT6 was detected to be about 45kDa (PMID:32978259).

Notable Publications

Author	Pubmed ID	Journal	Application
Irena J J Muffels	34805998	Brain Commun	WB
Elsa Wiame	30028079	FEBS J	WB,IF

Storage

Storage:

Store at -20°C. Stable for one year after shipment.

Storage Buffer:

PBS with 0.02% sodium azide and 50% glycerol pH 7.3.

Aliquoting is unnecessary for -20°C storage

*** 20ul sizes contain 0.1% BSA

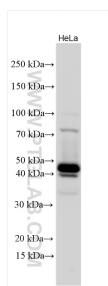
For technical support and original validation data for this product please contact:

T: 1 (888) 4PTGLAB (1-888-478-4522) (toll free in USA), or 1(312) 455-8498 (outside USA)

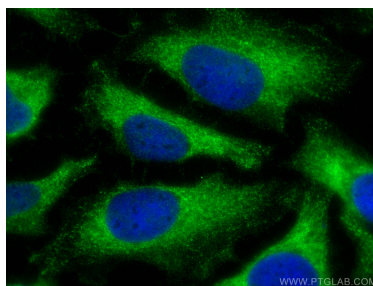
E: proteintech@ptglab.com
W: ptglab.com

This product is exclusively available under Proteintech Group brand and is not available to purchase from any other manufacturer.

Selected Validation Data



Various lysates were subjected to SDS PAGE followed by western blot with 15476-1-AP (NAT6/FUS2 antibody) at dilution of 1:1000 incubated at room temperature for 1.5 hours.



Immunofluorescent analysis of (-20°C Methanol) fixed HeLa cells using NAT6/FUS2 antibody (15476-1-AP) at dilution of 1:400 and CoraLite®488-Conjugated Goat Anti-Rabbit IgG(H+L).