

For Research Use Only

# UBE2E3 Polyclonal antibody

Catalog Number: 15488-1-AP **2 Publications**



## Basic Information

<b>Catalog Number:</b> 15488-1-AP	<b>GenBank Accession Number:</b> BC003554	<b>Purification Method:</b> Antigen affinity purification
<b>Size:</b> 150ul , Concentration: 750 µg/ml by Nanodrop and 360 µg/ml by Bradford method using BSA as the standard;	<b>GeneID (NCBI):</b> 10477	<b>Recommended Dilutions:</b> WB 1:500-1:3000 IHC 1:20-1:200
<b>Source:</b> Rabbit	<b>Full Name:</b> ubiquitin-conjugating enzyme E2E 3 (UBC4/5 homolog, yeast)	
<b>Isotype:</b> IgG	<b>Calculated MW:</b> 23 kDa	
<b>Immunogen Catalog Number:</b> AG7838	<b>Observed MW:</b> 23-27 kDa	

## Applications

### Tested Applications:

IHC, WB, ELISA

### Cited Applications:

WB

### Species Specificity:

human, mouse, rat

### Cited Species:

rat, mouse

**Note-IHC: suggested antigen retrieval with TE buffer pH 9.0; (\*) Alternatively, antigen retrieval may be performed with citrate buffer pH 6.0**

### Positive Controls:

**WB** : Jurkat cells, mouse kidney tissue, mouse liver tissue, Y79 cells

**IHC** : human heart tissue, human skeletal muscle tissue

## Background Information

### Notable Publications

Author	Pubmed ID	Journal	Application
Kazuhiko Watabe	32686212	Neuropathology	WB
Jingxian Deng	37628741	Int J Mol Sci	WB

## Storage

### Storage:

Store at -20°C. Stable for one year after shipment.

### Storage Buffer:

PBS with 0.02% sodium azide and 50% glycerol pH 7.3.

Aliquoting is unnecessary for -20°C storage

**\*\*\* 20ul sizes contain 0.1% BSA**

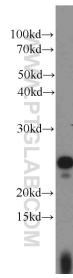
For technical support and original validation data for this product please contact:

T: 1 (888) 4PTGLAB (1-888-478-4522) (toll free in USA), or 1(312) 455-8498 (outside USA)

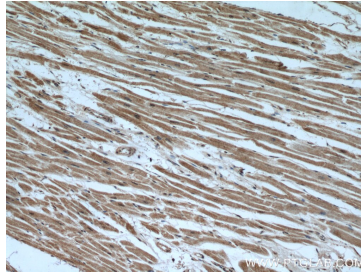
E: proteintech@ptglab.com  
W: ptglab.com

**This product is exclusively available under Proteintech Group brand and is not available to purchase from any other manufacturer.**

## Selected Validation Data



Jurkat cells were subjected to SDS PAGE followed by western blot with 15488-1-AP (UBE2E3 antibody) at dilution of 1:1000 incubated at room temperature for 1.5 hours.



Immunohistochemical analysis of paraffin-embedded human heart using 15488-1-AP (UBE2E3 antibody) at dilution of 1:50 (under 10x lens).



Immunohistochemical analysis of paraffin-embedded human heart using 15488-1-AP (UBE2E3 antibody) at dilution of 1:50 (under 40x lens).