

For Research Use Only

transgelin/SM22-specific Polyclonal antibody

Catalog Number: 15502-1-AP

4 Publications



Basic Information

Catalog Number:

15502-1-AP

Size:

150ul, Concentration: 280 ug/ml by Nanodrop and 167 ug/ml by Bradford method using BSA as the standard;

Source:

Rabbit

Isotype:

IgG

GenBank Accession Number:

NM_003186

GeneID (NCBI):

6876

UNIPROT ID:

Q01995

Full Name:

transgelin

Calculated MW:

22 kDa

Observed MW:

22-25 kDa

Purification Method:

Antigen affinity purification

Recommended Dilutions:

WB 1:300-1:600

IHC 1:100-1:4000

Applications

Tested Applications:

WB, IHC, ELISA

Cited Applications:

WB, IHC

Species Specificity:

human, mouse, rat

Cited Species:

human, mouse, rat

Positive Controls:

WB : mouse colon tissue,

IHC : human heart tissue, human colon tissue

Note-IHC: suggested antigen retrieval with TE buffer pH 9.0; (*) Alternatively, antigen retrieval may be performed with citrate buffer pH 6.0

Background Information

The transgelin family is a group of proteins that belong to 22 kDa actin-related corpnin superfamily. Of all three isoforms, transgelin 1 is the best characterized. Transgelin 1, also known as SM22alpha, is a specific marker for differentiated smooth muscle cells. Transgelin 2, also known as SM22 beta, is expressed by both smooth muscle and non-smooth muscle cells in a temporally and spatially regulated pattern. Transgelin 3, also known as NP25, is only found in highly differentiated neuronal cells. This antibody is specific to transgelin 1. It does not cross-react with transgelin 2 or 3.

Notable Publications

Author	Pubmed ID	Journal	Application
Weitie Wang	33510768	Front Genet	WB
Fang He	35178409	Front Med (Lausanne)	WB
B. Paul Herring	28039430	Physiol Genomics	WB

Storage

Storage:

Store at -20°C. Stable for one year after shipment.

Storage Buffer:

PBS with 0.02% sodium azide and 50% glycerol pH 7.3.

Aliquoting is unnecessary for -20°C storage

*** 20ul sizes contain 0.1% BSA

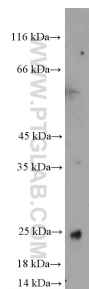
For technical support and original validation data for this product please contact:

T: 1 (888) 4PTGLAB (1-888-478-4522) (toll free in USA), or 1(312) 455-8498 (outside USA)

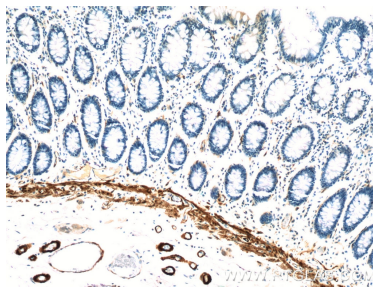
E: proteintech@ptglab.com
W: ptglab.com

This product is exclusively available under Proteintech Group brand and is not available to purchase from any other manufacturer.

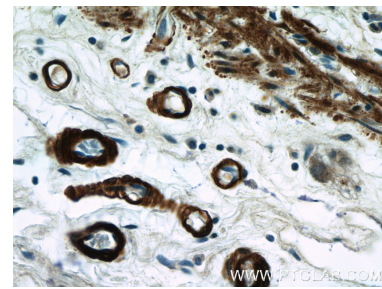
Selected Validation Data



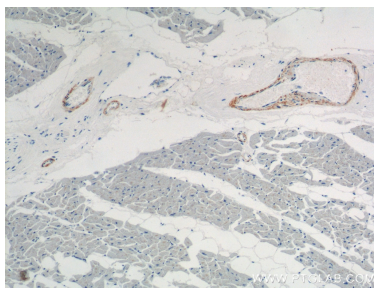
mouse colon tissue were subjected to SDS PAGE followed by western blot with 15502-1-AP (transgelin/SM22-specific antibody at dilution of 1:600 incubated at room temperature for 1.5 hours.



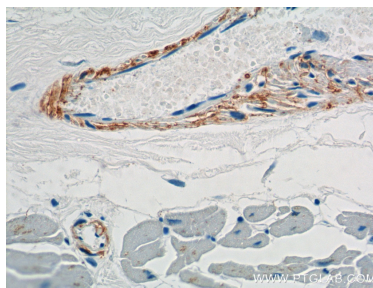
Immunohistochemical analysis of paraffin-embedded human colon tissue slide using 15502-1-AP (transgelin/SM22-specific antibody at dilution of 1:200 (under 10x lens).



Immunohistochemical analysis of paraffin-embedded human colon tissue slide using 15502-1-AP (transgelin/SM22-specific antibody at dilution of 1:200 (under 40x lens).



Immunohistochemical analysis of paraffin-embedded human heart tissue slide using 15502-1-AP (transgelin/SM22-specific antibody at dilution of 1:2000 (under 10x lens).



Immunohistochemical analysis of paraffin-embedded human heart tissue slide using 15502-1-AP (transgelin/SM22-specific antibody at dilution of 1:2000 (under 40x lens).