

For Research Use Only

# NFKB2,p52,p100-Specific Polyclonal antibody

Catalog Number: 15503-1-AP

Featured Product

8 Publications



## Basic Information

### Catalog Number:

15503-1-AP

### Size:

150ul, Concentration: 300 ug/ml by Nanodrop and 233 ug/ml by Bradford method using BSA as the standard;

### Source:

Rabbit

### Isotype:

IgG

### GenBank Accession Number:

NM\_001077494

### GeneID (NCBI):

4791

### ENSEMBL Gene ID:

ENSG00000077150

### UNIPROT ID:

Q00653

### Full Name:

nuclear factor of kappa light polypeptide gene enhancer in B-cells 2 (p49/p100)

### Calculated MW:

97 kDa

### Observed MW:

52/100 kDa

### Purification Method:

Antigen affinity purification

### Recommended Dilutions:

WB: 1:1000-1:8000

IHC: 1:20-1:200

IF/ICC: 1:200-1:800

## Applications

### Tested Applications:

WB, IHC, IF/ICC, ELISA

### Cited Applications:

WB, IHC, IF

### Species Specificity:

human, mouse, rat

### Cited Species:

human, rat

### Positive Controls:

WB: NIH/3T3 cells, HAP1 cells, C6 cells

IHC: human testis tissue, human spleen tissue

IF/ICC: HeLa cells,

**Note-IHC: suggested antigen retrieval with TE buffer pH 9.0; (\*) Alternatively, antigen retrieval may be performed with citrate buffer pH 6.0**

## Background Information

NF-kappa-B is a pleiotropic transcription factor which is present in almost all cell types and is involved in many biological processes such as inflammation, immunity, differentiation, cell growth, tumorigenesis and apoptosis. NF-kappa-B is a homo- or heterodimeric complex formed by the Rel-like domain-containing proteins RELA/p65, RELB, NFkB1/p105, NFkB1/p50, REL and NFkB2/p52. NFkB2 appears to have dual functions such as cytoplasmic retention of attached NF-kappa-B proteins by p100 and generation of p52 by a cotranslational processing. The proteasome-mediated process ensures the production of both p52 and p100 and preserves their independent function. P52 binds to the kappa-B consensus sequence 5'-GGRNNYYCC-3', located in the enhancer region of genes involved in immune response and acute phase reactions. P52 and p100 are respectively the minor and major form; the processing of p100 being relatively poor. Isoform p49 is a subunit of the NF-kappa-B protein complex, which stimulates the HIV enhancer in synergy with p65. This antibody can bind both p52 and p100 isoforms of NFkB2.

## Notable Publications

Author	Pubmed ID	Journal	Application
Xianhui Yang	34155950	Pharm Biol	WB
Ha-Yeon Shin	35159096	Cancers (Basel)	IHC
Jun Wang	30104686	Sci Rep	WB,IF

## Storage

### Storage:

Store at -20°C. Stable for one year after shipment.

### Storage Buffer:

PBS with 0.02% sodium azide and 50% glycerol, pH7.3

Aliquoting is unnecessary for -20°C storage

\*\*\* 20ul sizes contain 0.1% BSA

For technical support and original validation data for this product please contact:

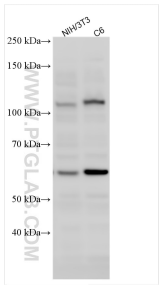
T: 1 (888) 4PTGLAB (1-888-478-4522) (toll free in USA), or 1(312) 455-8498 (outside USA)

E: [proteintech@ptglab.com](mailto:proteintech@ptglab.com)

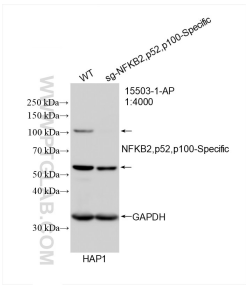
W: [ptglab.com](http://ptglab.com)

This product is exclusively available under Proteintech Group brand and is not available to purchase from any other manufacturer.

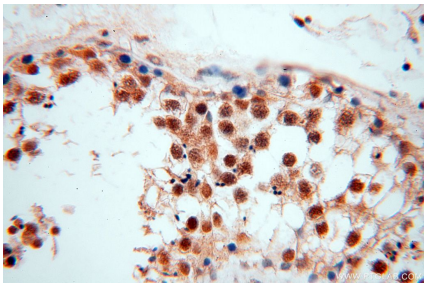
Selected Validation Data



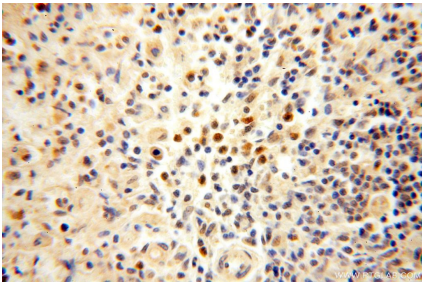
Various lysates were subjected to SDS PAGE followed by western blot with 15503-1-AP (NFKB2,p52,p100-Specific antibody) at dilution of 1:4000 incubated at room temperature for 1.5 hours.



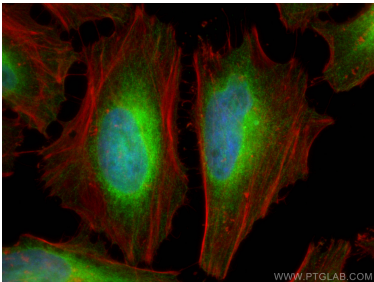
WB result of NFKB2,p52,p100-Specific antibody (15503-1-AP; 1:4000; room temperature for 1.5 hours) with wild-type and sg-NFKB2 transfected HAP1 cells.



Immunohistochemical analysis of paraffin-embedded human testis using 15503-1-AP (NFKB2,p52,p100-Specific antibody) at dilution of 1:50 (under 40x lens).



Immunohistochemical analysis of paraffin-embedded human spleen using 15503-1-AP (NFKB2,p52,p100-Specific antibody) at dilution of 1:50 (under 40x lens).



Immunofluorescent analysis of (4% PFA) fixed HeLa cells using NFKB2,p52,p100-Specific antibody (15503-1-AP) at dilution of 1:400 and CoraLite® 488-Conjugated AffiniPure Goat Anti-Rabbit IgG(H+L), (red).