

For Research Use Only

KCTD12 Polyclonal antibody, PBS Only

Catalog Number: 15523-1-PBS

Featured Product



Basic Information

Catalog Number:

15523-1-PBS

Size:

100ug, Concentration: 1 mg/ml by Nanodrop;

Source:

Rabbit

Isotype:

IgG

Immunogen Catalog Number:

AG5716

GenBank Accession Number:

BC013764

GeneID (NCBI):

115207

UNIPROT ID:

Q96CX2

Full Name:

potassium channel tetramerisation domain containing 12

Calculated MW:

36 kDa

Observed MW:

36 kDa

Purification Method:

Antigen affinity purification

Applications

Tested Applications:

WB, IHC, IF/ICC, Indirect ELISA

Species Specificity:

human, mouse, rat

Background Information

KCTD12 also known as PFET1 or PFETIN, which contains a voltage-gated potassium (K+) channel tetramerization T1 domain and a BTB/POZ (Bric-a-brac, Tram-track, Broad complex poxvirus and zinc finger) domain, belongs to the KCTD family and was initially identified in cochlea. In addition to being a K+ channel protein that responds to membrane potential⁷, KCTD12 also acts as an auxiliary subunit of GABAB (γ -aminobutyric acid type B) receptors, which regulate emotionality and neuronal excitability.

Storage

Storage:

Store at -80°C.

Storage Buffer:

PBS only, pH7.3

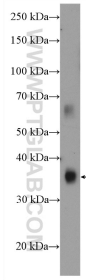
For technical support and original validation data for this product please contact:

T: 1 (888) 4PTGLAB (1-888-478-4522) (toll free in USA), or 1(312) 455-8498 (outside USA)

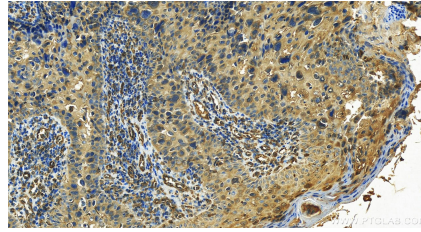
E: proteintech@ptglab.com
W: ptglab.com

This product is exclusively available under Proteintech Group brand and is not available to purchase from any other manufacturer.

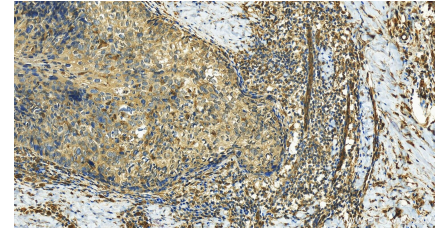
Selected Validation Data



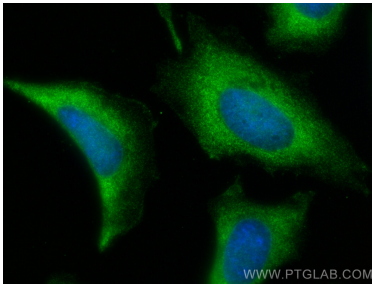
mouse brain tissue were subjected to SDS PAGE followed by western blot with 15523-1-AP (KCTD12 antibody) at dilution of 1:1000 incubated at room temperature for 1.5 hours. This data was developed using the same antibody clone with 15523-1-PBS in a different storage buffer formulation.



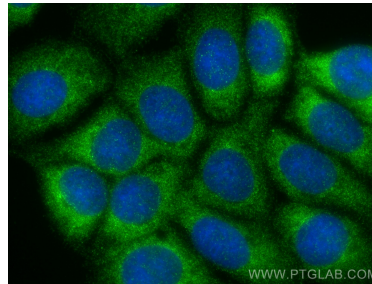
Immunohistochemical analysis of paraffin-embedded human Bowen disease slide using 15523-1-AP (KCTD12 antibody) at dilution of 1:200 (under 20x lens). Heat mediated antigen retrieval with Tris-EDTA buffer (pH 9.0). This data was developed using the same antibody clone with 15523-1-PBS in a different storage buffer formulation.



Immunohistochemical analysis of paraffin-embedded human Bowen disease slide using 15523-1-AP (KCTD12 antibody) at dilution of 1:200 (under 20x lens). Heat mediated antigen retrieval with Tris-EDTA buffer (pH 9.0). This data was developed using the same antibody clone with 15523-1-PBS in a different storage buffer formulation.



Immunofluorescent analysis of (-20°C Ethanol) fixed HeLa cells using KCTD12 antibody (15523-1-AP) at dilution of 1:400 and CoraLite®488-Conjugated Goat Anti-Rabbit IgG(H+L) (SA00013-2). This data was developed using the same antibody clone with 15523-1-PBS in a different storage buffer formulation.



Immunofluorescent analysis of (-20°C Methanol) fixed MCF-7 cells using KCTD12 antibody (15523-1-AP) at dilution of 1:400 and CoraLite®488-Conjugated Goat Anti-Rabbit IgG(H+L) (SA00013-2). This data was developed using the same antibody clone with 15523-1-PBS in a different storage buffer formulation.