

For Research Use Only

PRSS8 Polyclonal antibody

Catalog Number: 15527-1-AP **12 Publications**



Basic Information

Catalog Number: 15527-1-AP	GenBank Accession Number: BC001462	Purification Method: Antigen affinity purification
Size: 150ul , Concentration: 550 µg/ml by Nanodrop and 347 µg/ml by Bradford method using BSA as the standard;	GeneID (NCBI): 5652	Recommended Dilutions: WB 1:500-1:1000 IHC 1:50-1:500
Source: Rabbit	Full Name: protease, serine, 8	
Isotype: IgG	Calculated MW: 36 kDa	
Immunogen Catalog Number: AG7234	Observed MW: 39 kDa	

Applications

Tested Applications: IHC, WB, ELISA	Positive Controls:
Cited Applications: IHC, WB	WB : human colon tissue, mouse kidney tissue
Species Specificity: human, mouse, rat	IHC : mouse ovary tissue, human ovary tumor tissue
Cited Species: human, mouse	
Note-IHC: suggested antigen retrieval with TE buffer pH 9.0; (*) Alternatively, antigen retrieval may be performed with citrate buffer pH 6.0	

Background Information

Protease serine S1 family member 8 (PRSS8), a membrane-anchored serine protease, has been reported to be involved in the development of several human cancers. PRSS8 protein level was highly expressed in well differentiated cancer cell and was lower or absent in poorly differentiated cancer cell. Significantly higher levels of prostaticin were found in early stage OVC serum samples compared to benign ovarian and normal donor samples. Overexpression of PRSS8 mRNA and high levels of prostaticin in multiple subtypes of early stage ovarian tumors may provide clinical biomarkers for early detection of OVC. (PMID: 27036110, PMID: 27050145)

Notable Publications

Author	Pubmed ID	Journal	Application
Rikke Zachar	31566425	Am J Physiol Renal Physiol	WB
Rikke Zachar	31654198	Pflugers Arch	WB
Daniel Essigke	35312839	Pflugers Arch	WB

Storage

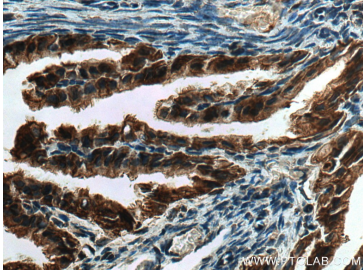
Storage:
Store at -20°C. Stable for one year after shipment.
Storage Buffer:
PBS with 0.02% sodium azide and 50% glycerol pH 7.3.
Aliquoting is unnecessary for -20°C storage

*** 20ul sizes contain 0.1% BSA

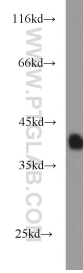
For technical support and original validation data for this product please contact:
T: 1 (888) 4PTGLAB (1-888-478-4522) (toll free in USA), or 1(312) 455-8498 (outside USA)
E: proteintech@ptglab.com
W: ptglab.com

This product is exclusively available under Proteintech Group brand and is not available to purchase from any other manufacturer.

Selected Validation Data



Immunohistochemical analysis of paraffin-embedded mouse ovary tissue slide using 15527-1-AP (PRSS8 antibody) at dilution of 1:200 (under 40x lens). Heat mediated antigen retrieval with Tris-EDTA buffer (pH 9.0).



human colon tissue were subjected to SDS PAGE followed by western blot with 15527-1-AP (PRSS8 antibody) at dilution of 1:500 incubated at room temperature for 1.5 hours.