

For Research Use Only

PRSS8 Polyclonal antibody, PBS Only

Catalog Number:15527-1-PBS



Basic Information

Catalog Number: 15527-1-PBS	GenBank Accession Number: BC001462	Purification Method: Antigen affinity purification
Size: 100ug , Concentration: 1 mg/ml by Nanodrop;	GeneID (NCBI): 5652	
Source: Rabbit	UNIPROT ID: Q16651	
Isotype: IgG	Full Name: protease, serine, 8	
Immunogen Catalog Number: AG7234	Calculated MW: 36 kDa	
	Observed MW: 39 kDa	

Applications

Tested Applications:
IHC, Indirect ELISA

Species Specificity:
human, mouse, rat

Background Information

Protease serine S1 family member 8 (PRSS8), a membrane-anchored serine protease, has been reported to be involved in the development of several human cancers. PRSS8 protein level was highly expressed in well differentiated cancer cell and was lower or absent in poorly differentiated cancer cell. Significantly higher levels of prostaticin were found in early stage OVC serum samples compared to benign ovarian and normal donor samples. Overexpression of PRSS8 mRNA and high levels of prostaticin in multiple subtypes of early stage ovarian tumors may provide clinical biomarkers for early detection of OVC. (PMID: 27036110, PMID: 27050145)

Storage

Storage:
Store at -80°C.

Storage Buffer:
PBS only, pH7.3

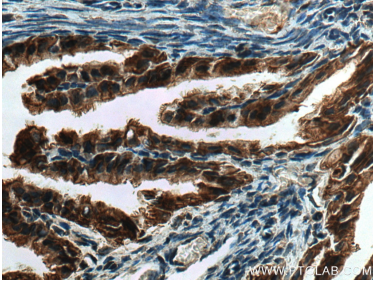
For technical support and original validation data for this product please contact:

T: 1 (888) 4PTGLAB (1-888-478-4522) (toll free in USA), or 1(312) 455-8498 (outside USA)

E: proteintech@ptglab.com
W: ptglab.com

This product is exclusively available under Proteintech Group brand and is not available to purchase from any other manufacturer.

Selected Validation Data



Immunohistochemical analysis of paraffin-embedded mouse ovary tissue slide using 15527-1-AP (PRSS8 antibody) at dilution of 1:200 (under 40x lens). Heat mediated antigen retrieval with Tris-EDTA buffer (pH 9.0). This data was developed using the same antibody clone with 15527-1-PBS in a different storage buffer formulation.