

For Research Use Only

CABC1 Polyclonal antibody

Catalog Number: 15528-1-AP

Featured Product

4 Publications



Basic Information

Catalog Number:

15528-1-AP

Size:

150ul, Concentration: 300 ug/ml by Nanodrop and 200 ug/ml by Bradford method using BSA as the standard;

Source:

Rabbit

Isotype:

IgG

Immunogen Catalog Number:

AG7612

GenBank Accession Number:

BC005171

GeneID (NCBI):

56997

UNIPROT ID:

Q8NI60

Full Name:

chaperone, ABC1 activity of bc1 complex homolog (S. pombe)

Calculated MW:

72 kDa

Observed MW:

60 kDa

Purification Method:

Antigen affinity purification

Recommended Dilutions:

WB 1:1000-1:4000

IHC 1:50-1:500

IF/ICC 1:50-1:500

Applications

Tested Applications:

WB, IHC, IF/ICC, ELISA

Cited Applications:

WB, IHC

Species Specificity:

human, mouse, rat

Cited Species:

human, mouse

Note-IHC: suggested antigen retrieval with TE buffer pH 9.0; (*) Alternatively, antigen retrieval may be performed with citrate buffer pH 6.0

Positive Controls:

WB: HeLa cells, human skeletal muscle tissue, human heart tissue, mouse heart tissue, U-251 cells

IHC: human stomach tissue,

IF/ICC: HepG2 cells,

Background Information

CABC1 (Chaperone, ABC1 activity of bc1 complex homolog) is induced by the tumor suppressor p53 and is similar to the yeast ABC1, which is involved in an electron-transferring membrane protein complex in the respiratory chain. The CABC1 product was located in mitochondria, and may play an important role in mediating p53-inducible apoptosis. Four isoforms of CABC1 exist due to alternative splicing events.

Notable Publications

Author	Pubmed ID	Journal	Application
Agustín Hidalgo-Gutiérrez	30482867	EMBO Mol Med	WB
Jiayin Wang	38429489	Cerebellum	WB
Tan Ming	38181856	Antiviral Res	WB

Storage

Storage:

Store at -20°C. Stable for one year after shipment.

Storage Buffer:

PBS with 0.02% sodium azide and 50% glycerol pH 7.3.

Aliquoting is unnecessary for -20°C storage

*** 20ul sizes contain 0.1% BSA

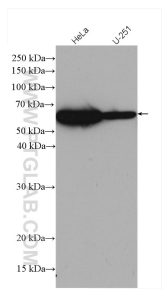
For technical support and original validation data for this product please contact:

T: 1 (888) 4PTGLAB (1-888-478-4522) (toll free in USA), or 1(312) 455-8498 (outside USA)

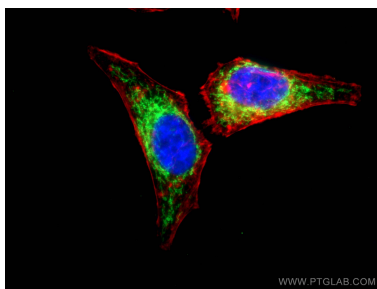
E: proteintech@ptglab.com
W: ptglab.com

This product is exclusively available under Proteintech Group brand and is not available to purchase from any other manufacturer.

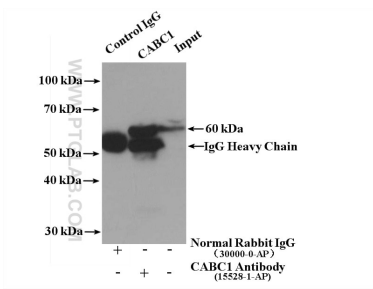
Selected Validation Data



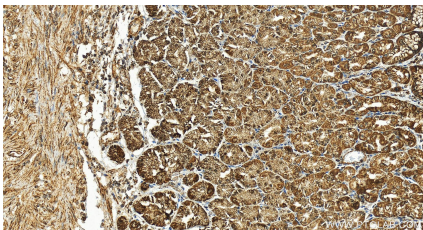
Various lysates were subjected to SDS PAGE followed by western blot with 15528-1-AP (CABC1 antibody) at dilution of 1:2000 incubated at room temperature for 1.5 hours.



Immunofluorescent analysis of (4% PFA) fixed HepG2 cells using 15528-1-AP (CABC1 antibody), at dilution of 1:100 and CoraLite@488-Conjugated AffiniPure Goat Anti-Rabbit IgG(H+L). Red: CL555-phalloidin staining of F-actin.



IP result of anti-CABC1 (IP:15528-1-AP, 4ug; Detection:15528-1-AP 1:300) with mouse heart tissue lysate 3700 ug.



Immunohistochemical analysis of paraffin-embedded human normal stomach slide using 15528-1-AP (CABC1 antibody) at dilution of 1:200 (under 20x lens). Heat mediated antigen retrieval with Tris-EDTA buffer (pH 9.0).