

For Research Use Only

# PPM1G Polyclonal antibody

Catalog Number: 15532-1-AP

Featured Product

3 Publications



## Basic Information

<b>Catalog Number:</b> 15532-1-AP	<b>GenBank Accession Number:</b> BC000057	<b>Purification Method:</b> Antigen affinity purification
<b>Size:</b> 150ul, Concentration: 450 µg/ml by Nanodrop and 267 µg/ml by Bradford method using BSA as the standard;	<b>GeneID (NCBI):</b> 5496	<b>Recommended Dilutions:</b> WB 1:500-1:3000 IHC 1:50-1:500 IF 1:200-1:800
<b>Source:</b> Rabbit	<b>Full Name:</b> protein phosphatase 1G (formerly 2C), magnesium-dependent, gamma isoform	
<b>Isotype:</b> IgG	<b>Calculated MW:</b> 59 kDa	
<b>Immunogen Catalog Number:</b> AG7751	<b>Observed MW:</b> 70 kDa	

## Applications

### Tested Applications:

IF, IHC, WB, ELISA

### Cited Applications:

IHC, WB

### Species Specificity:

human, mouse, rat

### Cited Species:

human

**Note-IHC: suggested antigen retrieval with TE buffer pH 9.0; (\*) Alternatively, antigen retrieval may be performed with citrate buffer pH 6.0**

### Positive Controls:

**WB** : HEK-293T cells, mouse lung tissue, Jurkat cells, MCF-7 cells

**IHC** : mouse kidney tissue, mouse testis tissue, human heart tissue, human kidney tissue, human skin tissue, human placenta tissue, human brain tissue, mouse spleen tissue, human liver tissue

**IF** : MCF-7 cells,

## Background Information

PPM1G, also known as PP2Cγ and PP2C $\delta$ , is an important member of the PP2C family of serine/threonine protein phosphatases and has an important role in controlling cell cycle progression. PPM1G restricts innate immune signaling mediated by STING and MAVS and is hijacked by KSHV for immune evasion (PMID: 33219031). In addition, PPM1G promotes the progression of hepatocellular carcinoma via phosphorylation regulation of alternative splicing protein SRSF3 (PMID: 34290239).

## Notable Publications

Author	Pubmed ID	Journal	Application
Mao-Xu Ge	31621893	Br J Pharmacol	WB
Dawei Chen	34290239	Cell Death Dis	WB, IHC
Weiran Liao	36072981	J Oncol	WB

## Storage

### Storage:

Store at -20°C. Stable for one year after shipment.

### Storage Buffer:

PBS with 0.02% sodium azide and 50% glycerol pH 7.3.

Aliquoting is unnecessary for -20°C storage

\*\*\* 20ul sizes contain 0.1% BSA

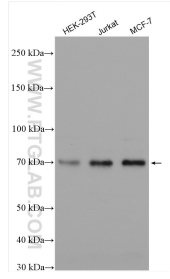
For technical support and original validation data for this product please contact:

T: 1 (888) 4PTGLAB (1-888-478-4522) (toll free in USA), or 1(312) 455-8498 (outside USA)

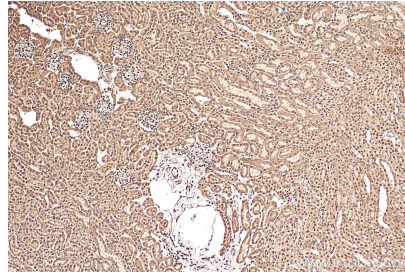
E: proteintech@ptglab.com  
W: ptglab.com

This product is exclusively available under Proteintech Group brand and is not available to purchase from any other manufacturer.

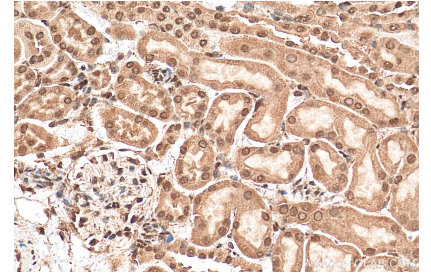
## Selected Validation Data



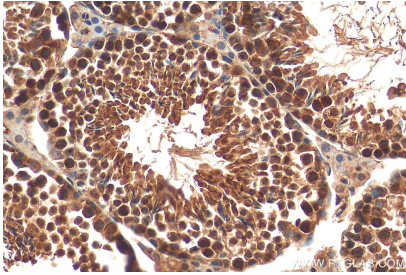
Various lysates were subjected to SDS PAGE followed by western blot with 15532-1-AP (PPM1G antibody) at dilution of 1:1500 incubated at room temperature for 1.5 hours.



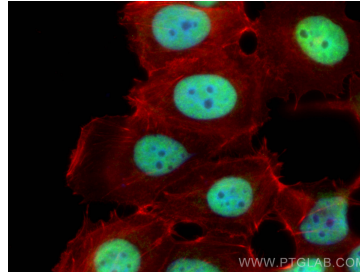
Immunohistochemical analysis of paraffin-embedded mouse kidney tissue slide using 15532-1-AP (PPM1G antibody) at dilution of 1:200 (under 10x lens). Heat mediated antigen retrieval with Tris-EDTA buffer (pH 9.0).



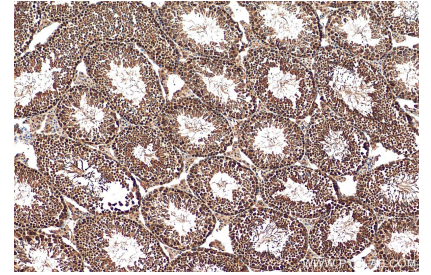
Immunohistochemical analysis of paraffin-embedded mouse kidney tissue slide using 15532-1-AP (PPM1G antibody) at dilution of 1:200 (under 40x lens). Heat mediated antigen retrieval with Tris-EDTA buffer (pH 9.0).



Immunohistochemical analysis of paraffin-embedded mouse testis tissue slide using 15532-1-AP (PPM1G antibody) at dilution of 1:200 (under 40x lens). Heat mediated antigen retrieval with Tris-EDTA buffer (pH 9.0).



Immunofluorescent analysis of (4% PFA) fixed MCF-7 cells using PPM1G antibody (15532-1-AP) at dilution of 1:400 and CoraLite®488-Conjugated AffiniPure Goat Anti-Rabbit IgG(H+L), CL594-Phalloidin (red).



Immunohistochemical analysis of paraffin-embedded mouse testis tissue slide using 15532-1-AP (PPM1G antibody) at dilution of 1:200 (under 10x lens). Heat mediated antigen retrieval with Tris-EDTA buffer (pH 9.0).