

For Research Use Only

MRPL49 Polyclonal antibody

Catalog Number: 15542-1-AP **6 Publications**



Basic Information

Catalog Number: 15542-1-AP	GenBank Accession Number: BC004378	Purification Method: Antigen affinity purification
Size: 150ul , Concentration: 500 µg/ml by Nanodrop and 333 µg/ml by Bradford method using BSA as the standard;	GeneID (NCBI): 740	Recommended Dilutions: WB 1:500-1:1000 IP 0.5-4.0 ug for IP and 1:500-1:1000 for WB
Source: Rabbit	Full Name: mitochondrial ribosomal protein L49	Calculated MW: 19 kDa
Isotype: IgG	Observed MW: 19 kDa	Immunogen Catalog Number: AG7898

Applications

Tested Applications: IHC, IP, WB, ELISA	Positive Controls: WB : BxPC-3 cells, A549 cells, HeLa cells
Cited Applications: WB	IP : HeLa cells,
Species Specificity: human	IHC : human breast cancer tissue,
Cited Species: human, mouse	

Note-IHC: suggested antigen retrieval with TE buffer pH 9.0; (*) Alternatively, antigen retrieval may be performed with citrate buffer pH 6.0

Background Information

MRPL49, also named as C11orf4, NOF1, or SW-cl.67, is a 166 amino acid protein, which belongs to the ribosomal protein L49em family. MRPL49 localizes in the Mitochondrion and is widely expressed in various tissues. MRPL49 is a regulator of C3 convertase of classical pathway.

Notable Publications

Author	Pubmed ID	Journal	Application
Joachim M Gerhold	26478270	Sci Rep	WB
Kazuo Yamamoto	24656129	Mol Cell	WB
Nina Rajala	24163258	Nucleic Acids Res	WB

Storage

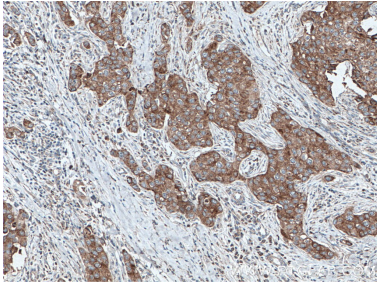
Storage:
Store at -20°C. Stable for one year after shipment.
Storage Buffer:
PBS with 0.02% sodium azide and 50% glycerol pH 7.3.
Aliquoting is unnecessary for -20°C storage

***** 20ul sizes contain 0.1% BSA**

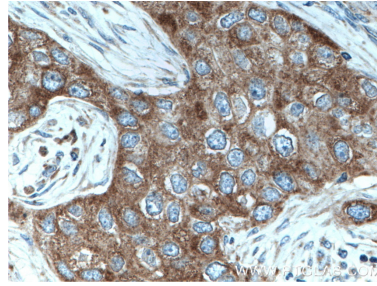
For technical support and original validation data for this product please contact:
T: 1 (888) 4PTGLAB (1-888-478-4522) (toll free in USA), or 1(312) 455-8498 (outside USA) E: proteintech@ptglab.com W: ptglab.com

This product is exclusively available under Proteintech Group brand and is not available to purchase from any other manufacturer.

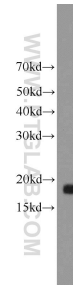
Selected Validation Data



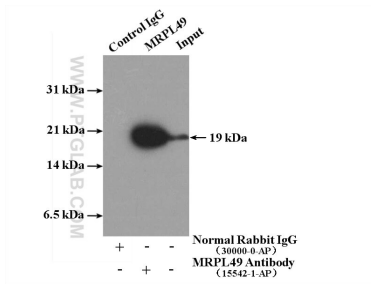
Immunohistochemical analysis of paraffin-embedded human breast cancer tissue slide using 15542-1-AP (MRPL49 antibody) at dilution of 1:200 (under 10x lens. Heat mediated antigen retrieval with Tris-EDTA buffer (pH 9.0)).



Immunohistochemical analysis of paraffin-embedded human breast cancer tissue slide using 15542-1-AP (MRPL49 antibody) at dilution of 1:200 (under 40x lens. Heat mediated antigen retrieval with Tris-EDTA buffer (pH 9.0)).



BxPC-3 cells were subjected to SDS PAGE followed by western blot with 15542-1-AP (MRPL49 antibody) at dilution of 1:800 incubated at room temperature for 1.5 hours.



IP Result of anti-MRPL49 (IP:15542-1-AP, 4ug; Detection:15542-1-AP 1:500) with HeLa cells lysate 3360ug.