

For Research Use Only

# MRPL11 Polyclonal antibody

Catalog Number: 15543-1-AP

15 Publications



## Basic Information

### Catalog Number:

15543-1-AP

### Size:

150ul, Concentration: 400 ug/ml by Nanodrop and 293 ug/ml by Bradford method using BSA as the standard;

### Source:

Rabbit

### Isotype:

IgG

### Immunogen Catalog Number:

AG7899

### GenBank Accession Number:

BC005002

### GeneID (NCBI):

65003

### UNIPROT ID:

Q9Y3B7

### Full Name:

mitochondrial ribosomal protein L11

### Calculated MW:

21 kDa

### Observed MW:

21 kDa

### Purification Method:

Antigen affinity purification

### Recommended Dilutions:

WB 1:1000-1:6000

IP 0.5-4.0 ug for 1.0-3.0 mg of total protein lysate

IHC 1:20-1:200

IF/ICC 1:50-1:500

## Applications

### Tested Applications:

WB, IHC, IF/ICC, IP, ELISA

### Cited Applications:

WB, ColP

### Species Specificity:

human, mouse, rat

### Cited Species:

human, mouse

**Note-IHC: suggested antigen retrieval with TE buffer pH 9.0; (\*) Alternatively, antigen retrieval may be performed with citrate buffer pH 6.0**

### Positive Controls:

WB : BxPC-3 cells, K-562 cells

IP : mouse liver tissue,

IHC : human liver tissue,

IF/ICC : HepG2 cells,

## Background Information

MRPL11 is one of the protein components of mitochondrial ribosomes encoded by the nuclear genome, which is essential for oxidative phosphorylation.

## Notable Publications

Author	Pubmed ID	Journal	Application
Uwe Richter	30262910	Nat Commun	WB
Uwe Richter	26504172	J Cell Biol	WB
Christopher B Jackson	30358850	Hum Mol Genet	WB

## Storage

### Storage:

Store at -20°C. Stable for one year after shipment.

### Storage Buffer:

PBS with 0.02% sodium azide and 50% glycerol pH 7.3.

Aliquoting is unnecessary for -20°C storage

\*\*\* 20ul sizes contain 0.1% BSA

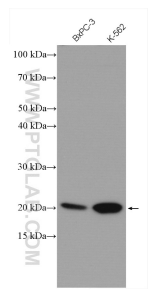
For technical support and original validation data for this product please contact:

T: 1 (888) 4PTGLAB (1-888-478-4522) (toll free in USA), or 1(312) 455-8498 (outside USA)

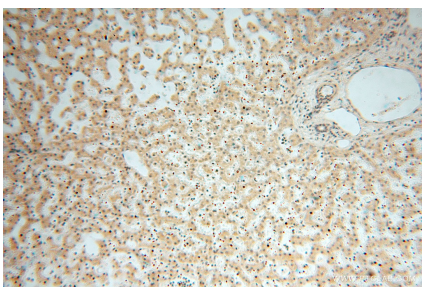
E: [proteintech@ptglab.com](mailto:proteintech@ptglab.com)  
W: [ptglab.com](http://ptglab.com)

This product is exclusively available under Proteintech Group brand and is not available to purchase from any other manufacturer.

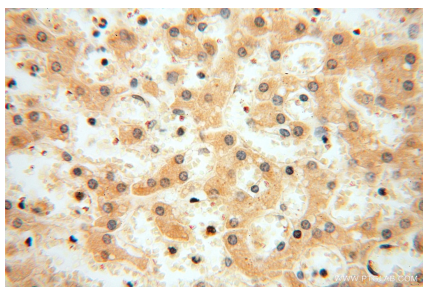
Selected Validation Data



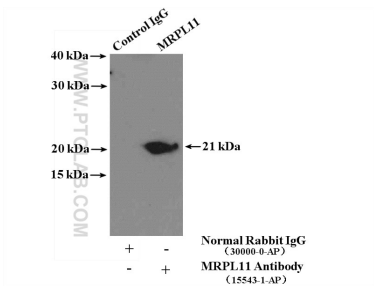
Various lysates were subjected to SDS PAGE followed by western blot with 15543-1-AP (MRPL11 antibody) at dilution of 1:3000 incubated at room temperature for 1.5 hours.



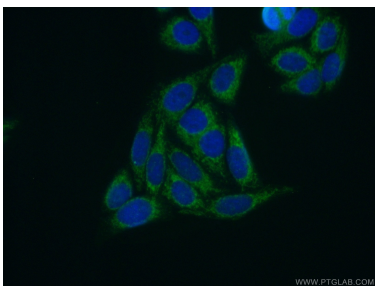
Immunohistochemical analysis of paraffin-embedded human liver using 15543-1-AP (MRPL11 antibody) at dilution of 1:50 (under 10x lens).



Immunohistochemical analysis of paraffin-embedded human liver using 15543-1-AP (MRPL11 antibody) at dilution of 1:50 (under 40x lens).



IP result of anti-MRPL11 (IP:15543-1-AP, 4ug; Detection:15543-1-AP 1:1000) with mouse liver tissue lysate 4000ug.



Immunofluorescent analysis of (10% Formaldehyde) fixed HepG2 cells using 15543-1-AP (MRPL11 antibody) at dilution of 1:50 and Alexa Fluor 488-conjugated Goat Anti-Rabbit IgG(H+L).