

For Research Use Only

PRPS1 Polyclonal antibody

Catalog Number: 15549-1-AP

14 Publications



Basic Information

Catalog Number:

15549-1-AP

Size:

150ul, Concentration: 300 ug/ml by Nanodrop;

Source:

Rabbit

Isotype:

IgG

Immunogen Catalog Number:

AG7907

GenBank Accession Number:

BC001605

GeneID (NCBI):

5631

UNIPROT ID:

P60891

Full Name:

phosphoribosyl pyrophosphate synthetase 1

Calculated MW:

318 aa, 35 kDa

Observed MW:

35 kDa

Purification Method:

Antigen affinity purification

Recommended Dilutions:

WB 1:1000-1:6000

IP 0.5-4.0 ug for 1.0-3.0 mg of total protein lysate

IHC 1:50-1:500

IF/ICC 1:50-1:500

Applications

Tested Applications:

WB, IHC, IF/ICC, IP, ELISA

Cited Applications:

WB, IHC, IF, CoIP

Species Specificity:

human, mouse, rat

Cited Species:

human, mouse

Note-IHC: suggested antigen retrieval with TE buffer pH 9.0; (*) Alternatively, antigen retrieval may be performed with citrate buffer pH 6.0

Positive Controls:

WB : HEK-293 cells, rat spleen tissue, HeLa cells, Jurkat cells, mouse kidney tissue, rat kidney tissue

IP : HeLa cells,

IHC : mouse testis tissue,

IF/ICC : U-251 cells,

Background Information

PRPS1, also named as Ribose-phosphate pyrophosphokinase 1, is a 318 amino acid protein, which belongs to the ribose-phosphate pyrophosphokinase family. PRPS1 can form Homodimer and the active form is probably a hexamer composed of 3 homodimers. PRPS1 catalyzes the synthesis of phosphoribosylpyrophosphate (PRPP) which is essential for nucleotide synthesis. PRPS1 as a module has an association with the Hepatocellular carcinoma.

Notable Publications

Author	Pubmed ID	Journal	Application
Guohang Xiong	36203561	Front Immunol	WB, IHC
Ronghui Yang	36396642	Nat Commun	WB
Chia-Chun Chang	35833994	Cell Mol Life Sci	IF

Storage

Storage:

Store at -20°C. Stable for one year after shipment.

Storage Buffer:

PBS with 0.02% sodium azide and 50% glycerol pH 7.3.

Aliquoting is unnecessary for -20°C storage

*** 20ul sizes contain 0.1% BSA

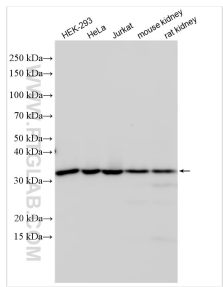
For technical support and original validation data for this product please contact:

T: 1 (888) 4PTGLAB (1-888-478-4522) (toll free in USA), or 1(312) 455-8498 (outside USA)

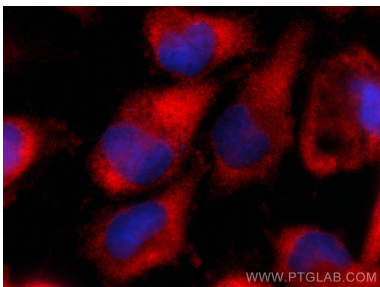
E: proteintech@ptglab.com
W: ptglab.com

This product is exclusively available under Proteintech Group brand and is not available to purchase from any other manufacturer.

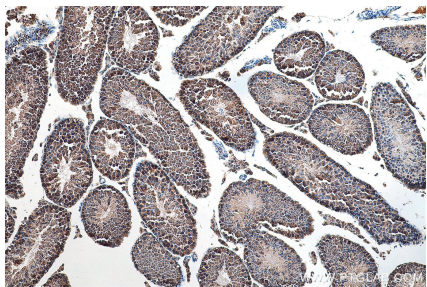
Selected Validation Data



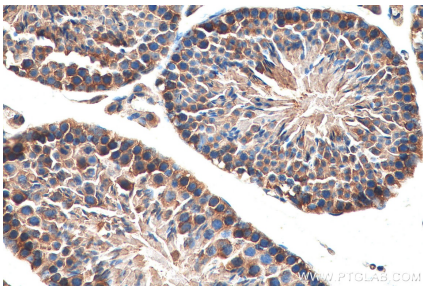
Various lysates were subjected to SDS PAGE followed by western blot with 15549-1-AP (PRPS1 antibody) at dilution of 1:3000 incubated at room temperature for 1.5 hours.



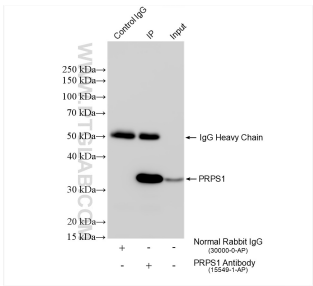
Immunofluorescent analysis of (-20°C Ethanol) fixed U-251 cells using PRPS1 antibody (15549-1-AP) at dilution of 1:200 and CoraLite®594-Conjugated Goat Anti-Rabbit IgG(H+L) (SA00013-4).



Immunohistochemical analysis of paraffin-embedded mouse testis tissue slide using 15549-1-AP (PRPS1 antibody) at dilution of 1:200 (under 10x lens). Heat mediated antigen retrieval with Tris-EDTA buffer (pH 9.0).



Immunohistochemical analysis of paraffin-embedded mouse testis tissue slide using 15549-1-AP (PRPS1 antibody) at dilution of 1:200 (under 40x lens). Heat mediated antigen retrieval with Tris-EDTA buffer (pH 9.0).



IP result of anti-PRPS1 (IP:15549-1-AP, 4ug; Detection:15549-1-AP 1:2000) with HeLa cells lysate 1600 ug.