

For Research Use Only

KCTD2/5/17 Polyclonal antibody

Catalog Number: 15553-1-AP

Featured Product

9 Publications



Basic Information

Catalog Number:

15553-1-AP

Size:

150ul, Concentration: 500 ug/ml by Nanodrop and 333 ug/ml by Bradford method using BSA as the standard;

Source:

Rabbit

Isotype:

IgG

Immunogen Catalog Number:

AG7915

GenBank Accession Number:

BC007314

GeneID (NCBI):

54442

UNIPROT ID:

Q9NXV2

Full Name:

potassium channel tetramerisation domain containing 5

Calculated MW:

26 kDa

Observed MW:

26 kDa

Purification Method:

Antigen affinity purification

Recommended Dilutions:

WB 1:500-1:2000

IP 0.5-4.0 ug for 1.0-3.0 mg of total protein lysate

IHC 1:20-1:200

IF/ICC 1:200-1:800

Applications

Tested Applications:

WB, IHC, IF/ICC, IP, ELISA

Cited Applications:

WB, IP

Species Specificity:

human, mouse, rat

Cited Species:

human, mouse, rat

Note-IHC: suggested antigen retrieval with TE buffer pH 9.0; (*) Alternatively, antigen retrieval may be performed with citrate buffer pH 6.0

Positive Controls:

WB: HeLa cells, human brain tissue

IP: HeLa cells,

IHC: human ovary tumor tissue,

IF/ICC: HeLa cells,

Background Information

KCTD5 belongs to the human potassium (K⁺) channel tetramerization domain (KCTD) family of proteins which share sequence similarity with the cytoplasmic domain of voltage-gated K⁺ channels (Kv channels). The KCTD proteins have relatively conserved N-terminal domains and variable C-termini (PMID: 24268103). KCTD5 interacts with cullin3 and has been proposed to function as substrate adapter for cullin3 based ubiquitin E3 ligases (PMID: 26188516). This polyclonal antibody raised against full-length recombinant protein of human KCTD5 (26 kDa) can cross-react with other KCTD proteins, including KCTD2 (29 kDa), KCTD17 (33-36 kDa).

Notable Publications

Author	Pubmed ID	Journal	Application
Hao Zeng	31741433	Elife	WB
Peipei Ding	35649359	Cell Rep	WB
Qiuling Li	28558011	PLoS Genet	WB

Storage

Storage:

Store at -20°C. Stable for one year after shipment.

Storage Buffer:

PBS with 0.02% sodium azide and 50% glycerol pH 7.3.

Aliquoting is unnecessary for -20°C storage

*** 20ul sizes contain 0.1% BSA

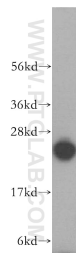
For technical support and original validation data for this product please contact:

T: 1 (888) 4PTGLAB (1-888-478-4522) (toll free in USA), or 1(312) 455-8498 (outside USA)

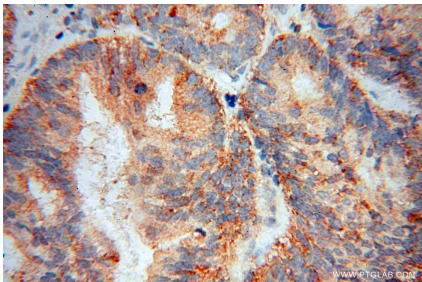
E: proteintech@ptglab.com
W: ptglab.com

This product is exclusively available under Proteintech Group brand and is not available to purchase from any other manufacturer.

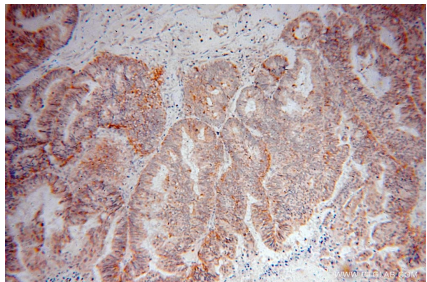
Selected Validation Data



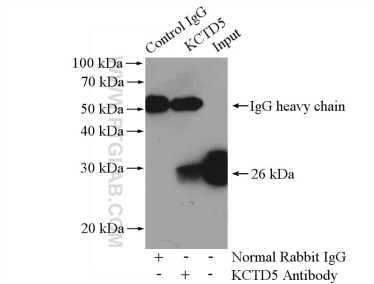
HeLa cells were subjected to SDS PAGE followed by western blot with 15553-1-AP (KCTD5 antibody) at dilution of 1:500 incubated at room temperature for 1.5 hours.



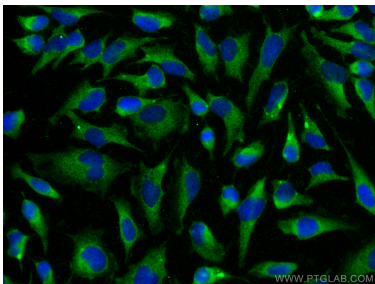
Immunohistochemical analysis of paraffin-embedded human ovary tumor using 15553-1-AP (KCTD5 antibody) at dilution of 1:50 (under 40x lens).



Immunohistochemical analysis of paraffin-embedded human ovary tumor using 15553-1-AP (KCTD5 antibody) at dilution of 1:50 (under 10x lens).



IP result of anti-KCTD2/5/17 (IP:15553-1-AP, 4ug; Detection:15553-1-AP 1:500) with HeLa cells lysate 1200ug.



Immunofluorescent analysis of (-20°C Methanol) fixed HeLa cells using KCTD2/5/17 antibody (15553-1-AP) at dilution of 1:400 and Coralite® 488-Conjugated Goat Anti-Rabbit IgG(H+L).