

For Research Use Only

NDUFA1 Polyclonal antibody

Catalog Number: 15561-1-AP

2 Publications



Basic Information

Catalog Number:

15561-1-AP

Size:

150ul, Concentration: 400 ug/ml by Nanodrop;

Source:

Rabbit

Isotype:

IgG

Immunogen Catalog Number:

AG7206

GenBank Accession Number:

BC000266

GeneID (NCBI):

4694

UNIPROT ID:

O15239

Full Name:

NADH dehydrogenase (ubiquinone) 1 alpha subcomplex, 1, 7.5kDa

Calculated MW:

7.5 kDa

Observed MW:

7.5 kDa

Purification Method:

Antigen affinity purification

Recommended Dilutions:

WB 1:500-1:2000

IHC 1:50-1:500

Applications

Tested Applications:

WB, IHC, ELISA

Cited Applications:

WB

Species Specificity:

human, mouse, rat

Cited Species:

human, rat

Note-IHC: suggested antigen retrieval with TE buffer pH 9.0; (*) Alternatively, antigen retrieval may be performed with citrate buffer pH 6.0

Positive Controls:

WB: mouse heart tissue, mouse kidney tissue, rat heart tissue, mouse liver tissue

IHC: mouse liver tissue, mouse heart tissue

Background Information

The NDUFA1 gene encoding the MWFE polypeptide is located on the X chromosome. The NDUFA1 gene product (MWFE protein) is essential for activity of complex I in mammalian mitochondria, and it is predicted to be a membrane protein (PMID: 10200266).

Notable Publications

Author	Pubmed ID	Journal	Application
Xiaolei Zhang	36178619	Methods Mol Biol	WB
Zhao-Yu Xiang	37334311	Front Endocrinol (Lausanne)	WB

Storage

Storage:

Store at -20°C. Stable for one year after shipment.

Storage Buffer:

PBS with 0.02% sodium azide and 50% glycerol pH 7.3.

Aliquoting is unnecessary for -20°C storage

*** 20ul sizes contain 0.1% BSA

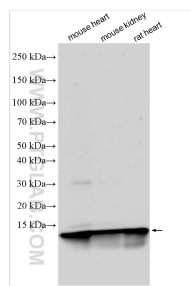
For technical support and original validation data for this product please contact:

T: 1 (888) 4PTGLAB (1-888-478-4522) (toll free in USA), or 1(312) 455-8498 (outside USA)

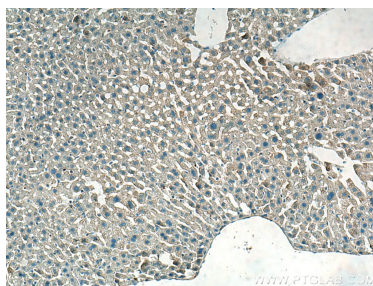
E: proteintech@ptglab.com
W: ptglab.com

This product is exclusively available under Proteintech Group brand and is not available to purchase from any other manufacturer.

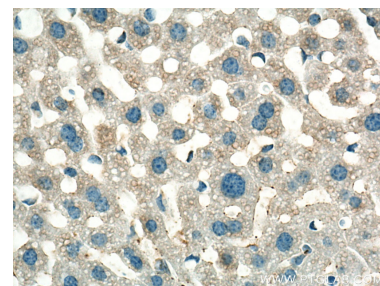
Selected Validation Data



Various lysates were subjected to SDS PAGE followed by western blot with 15561-1-AP (NDUFA1 antibody) at dilution of 1:1000 incubated at room temperature for 1.5 hours.



Immunohistochemical analysis of paraffin-embedded mouse liver tissue slide using 15561-1-AP (NDUFA1 antibody) at dilution of 1:200 (under 10x lens). Heat mediated antigen retrieval with Tris-EDTA buffer (pH 9.0).



Immunohistochemical analysis of paraffin-embedded mouse liver tissue slide using 15561-1-AP (NDUFA1 antibody) at dilution of 1:200 (under 40x lens). Heat mediated antigen retrieval with Tris-EDTA buffer (pH 9.0).