

For Research Use Only

DIMT1L Polyclonal antibody

Catalog Number: 15563-1-AP **1 Publications**



Basic Information

Catalog Number: 15563-1-AP	GenBank Accession Number: BC002841	Purification Method: Antigen affinity purification
Size: 150ul , Concentration: 500 µg/ml by Nanodrop and 267 µg/ml by Bradford method using BSA as the standard;	GeneID (NCBI): 27292	Recommended Dilutions: WB 1:500-1:1000
Source: Rabbit	Full Name: DIM1 dimethyladenosine transferase 1-like (<i>S. cerevisiae</i>)	
Isotype: IgG	Calculated MW: 35 kDa	
Immunogen Catalog Number: AG7721	Observed MW: 35 kDa	

Applications

Tested Applications: WB, ELISA	Positive Controls: WB : HeLa cells, Raji cells, Jurkat cells
Cited Applications: WB	
Species Specificity: human, mouse, rat	
Cited Species: human	

Background Information

Notable Publications

Author	Pubmed ID	Journal	Application
James C Murphy	36653366	Nat Commun	WB

Storage

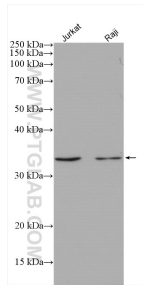
Storage:
Store at -20°C. Stable for one year after shipment.
Storage Buffer:
PBS with 0.02% sodium azide and 50% glycerol pH 7.3.
Aliquoting is unnecessary for -20°C storage

***** 20ul sizes contain 0.1% BSA**

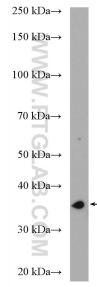
For technical support and original validation data for this product please contact:
T: 1 (888) 4PTGLAB (1-888-478-4522) (toll free in USA), or 1(312) 455-8498 (outside USA)
E: proteintech@ptglab.com
W: ptglab.com

This product is exclusively available under Proteintech Group brand and is not available to purchase from any other manufacturer.

Selected Validation Data



Various lysates were subjected to SDS PAGE followed by western blot with 15563-1-AP (DIMT1L antibody) at dilution of 1:1500 incubated at room temperature for 1.5 hours.



HeLa cells were subjected to SDS PAGE followed by western blot with 15563-1-AP (DIMT1L antibody) at dilution of 1:800 incubated at room temperature for 1.5 hours.