

For Research Use Only

SEH1L Polyclonal antibody

Catalog Number: 15565-1-AP **1 Publications**



Basic Information

| | | |
|---|--|---|
| Catalog Number: 15565-1-AP | GenBank Accession Number: BC012430 | Purification Method: Antigen affinity purification |
| Size: 150ul , Concentration: 550 ug/ml by Nanodrop; | GeneID (NCBI): 81929 | Recommended Dilutions: WB 1:2000-1:12000 IF/ICC 1:500-1:2000 |
| Source: Rabbit | UNIPROT ID: Q96EE3 | |
| Isotype: IgG | Full Name: SEH1-like (S. cerevisiae) | |
| Immunogen Catalog Number: AG7795 | Calculated MW: 39.6 kDa | |
| | Observed MW: 36-39 kDa | |

Applications

| | |
|--|---|
| Tested Applications: WB, IF/ICC, ELISA | Positive Controls: WB : HEK-293 cells, HeLa cells IF/ICC : A549 cells, |
| Cited Applications: WB | |
| Species Specificity: human | |
| Cited Species: human | |

Notable Publications

| Author | Pubmed ID | Journal | Application |
|-------------|-----------|-----------|-------------|
| Ziyang Feng | 39095556 | Apoptosis | WB |

Storage

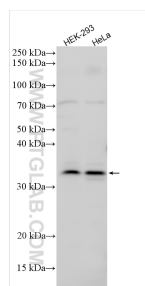
Storage:
Store at -20°C. Stable for one year after shipment.
Storage Buffer:
PBS with 0.02% sodium azide and 50% glycerol pH 7.3.
Aliquoting is unnecessary for -20°C storage

*** 20ul sizes contain 0.1% BSA

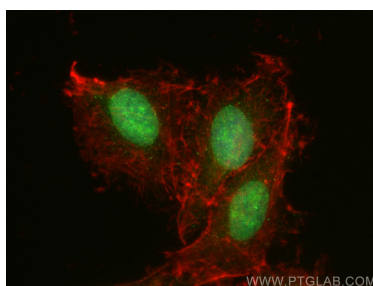
For technical support and original validation data for this product please contact:
T: 1 (888) 4PTGLAB (1-888-478-4522) (toll free in USA), or 1(312) 455-8498 (outside USA)
E: proteintech@ptglab.com
W: ptglab.com

This product is exclusively available under Proteintech Group brand and is not available to purchase from any other manufacturer.

Selected Validation Data



Various lysates were subjected to SDS PAGE followed by western blot with 15565-1-AP (SEH1L antibody) at dilution of 1:6000 incubated at room temperature for 1.5 hours.



Immunofluorescent analysis of (4% PFA) fixed A549 cells using SEH1L antibody (15565-1-AP) at dilution of 1:1000 and Multi-rAb CoraLite® Plus 488-Goat Anti-Rabbit Recombinant Secondary Antibody (H+L) (RGAR002).