

For Research Use Only

DUSP26 Polyclonal antibody, PBS Only

Catalog Number: 15568-1-PBS



Basic Information

Catalog Number:

15568-1-PBS

Size:

100ug, Concentration: 1 mg/ml by Nanodrop;

Source:

Rabbit

Isotype:

IgG

Immunogen Catalog Number:

AG7831

GenBank Accession Number:

BC001613

GeneID (NCBI):

78986

UNIPROT ID:

Q9BV47

Full Name:

dual specificity phosphatase 26 (putative)

Calculated MW:

24 kDa

Observed MW:

20-24 kDa

Purification Method:

Antigen affinity purification

Applications

Tested Applications:

WB, Indirect ELISA

Species Specificity:

human, mouse, rat

Background Information

Dual specificity phosphatase 26 (DUSP26) is an atypical DUSP with a range of physiological substrates including the MAPKs. DUSP26 is highly expressed in neuro-endocrine tissue and is absent in several human cancer cell lines including those derived from brain tumours, neuroblastomas, squamous tumours, lymphoma, colon cancer, non-small cell lung cancer, melanoma, prostatic carcinoma, breast carcinoma and cervical carcinoma (PMID: 33466673, 39222869). DUSP26 exerts a cytoprotective role by selectively dephosphorylating p53 at serine 312. DUSP26 is a 24kda atypical type I cysteine-based dual-specificity phosphatase (PMID: 41748589, 35313355).

Storage

Storage:

Store at -80°C.

Storage Buffer:

PBS only, pH7.3

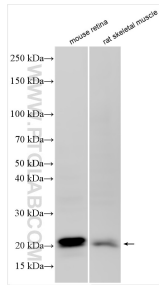
For technical support and original validation data for this product please contact:

T: 1 (888) 4PTGLAB (1-888-478-4522) (toll free in USA), or 1(312) 455-8498 (outside USA)

E: proteintech@ptglab.com
W: ptglab.com

This product is exclusively available under Proteintech Group brand and is not available to purchase from any other manufacturer.

Selected Validation Data



Various lysates were subjected to SDS PAGE followed by western blot with 15568-1-AP (DUSP26 antibody) at dilution of 1:500 incubated at room temperature for 1.5 hours. This data was developed using the same antibody clone with 15568-1-PBS in a different storage buffer formulation.