

For Research Use Only

GMCL1 Polyclonal antibody

Catalog Number: 15575-1-AP



Basic Information

Catalog Number:

15575-1-AP

Size:

150ul, Concentration: 500 ug/ml by Nanodrop and 260 ug/ml by Bradford method using BSA as the standard;

Source:

Rabbit

Isotype:

IgG

Immunogen Catalog Number:

AG7929

GenBank Accession Number:

BC007420

GeneID (NCBI):

64395

UNIPROT ID:

Q96IK5

Full Name:

germ cell-less homolog 1 (Drosophila)

Calculated MW:

59 kDa

Observed MW:

55 kDa

Purification Method:

Antigen affinity purification

Recommended Dilutions:

WB 1:1000-1:6000

IHC 1:20-1:200

Applications

Tested Applications:

WB, IHC, ELISA

Species Specificity:

human, mouse, rat

Note-IHC: suggested antigen retrieval with TE buffer pH 9.0; (*) Alternatively, antigen retrieval may be performed with citrate buffer pH 6.0

Positive Controls:

WB : mouse heart tissue, mouse skeletal muscle tissue

IHC : human thyroid tissue, human testis tissue

Background Information

GMCL1, also named as GCL, functions in spermatogenesis. It enhances the degradation of MDM2 and increases the amount of p53 probably by modulating the nucleocytoplasmic transport. In WB test, the antibody recognizes 55 kDa band in our detection.

Storage

Storage:

Store at -20°C. Stable for one year after shipment.

Storage Buffer:

PBS with 0.02% sodium azide and 50% glycerol pH 7.3.

Aliquoting is unnecessary for -20°C storage

*** 20ul sizes contain 0.1% BSA

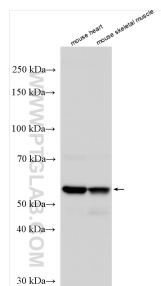
For technical support and original validation data for this product please contact:

T: 1 (888) 4PTGLAB (1-888-478-4522) (toll free in USA), or 1(312) 455-8498 (outside USA)

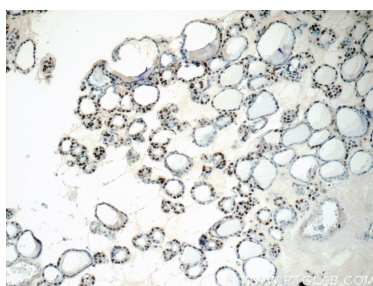
E: proteintech@ptglab.com
W: ptglab.com

This product is exclusively available under Proteintech Group brand and is not available to purchase from any other manufacturer.

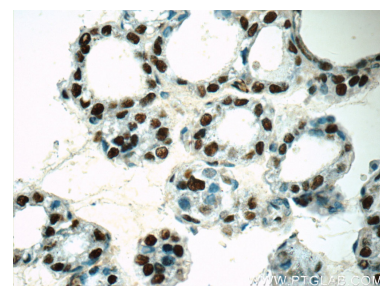
Selected Validation Data



Various lysates were subjected to SDS PAGE followed by western blot with 15575-1-AP (GMCL1 antibody) at dilution of 1:3000 incubated at room temperature for 1.5 hours.



Immunohistochemical analysis of paraffin-embedded human thyroid tissue slide using 15575-1-AP (GMCL1 Antibody) at dilution of 1:50.



Immunohistochemical analysis of paraffin-embedded human thyroid tissue slide using 15575-1-AP (GMCL1 Antibody) at dilution of 1:50.