

For Research Use Only

ALDH3A1 Polyclonal antibody

Catalog Number: 15578-1-AP

Featured Product

20 Publications



Basic Information

Catalog Number: 15578-1-AP	GenBank Accession Number: BC004370	Purification Method: Antigen affinity purification
Size: 150ul , Concentration: 650 µg/ml by Nanodrop;	GeneID (NCBI): 218	Recommended Dilutions: WB 1:20000-1:100000 IP 0.5-4.0 ug for IP and 1:1000-1:6000 for WB
Source: Rabbit	Full Name: aldehyde dehydrogenase 3 family, memberA1	IF 1:50-1:500
Isotype: IgG	Calculated MW: 50 kDa	
Immunogen Catalog Number: AG7977	Observed MW: 48 kDa	

Applications

Tested Applications: FC, IF, IP, WB, ELISA	Positive Controls:
Cited Applications: FC, IF, IHC, WB	WB: A549 cells,
Species Specificity: human, mouse, rat	IP: A549 cells,
Cited Species: human, rat, mouse, rabbit	IF: HEK-293T cells,

Background Information

ALDH3A1 (Aldehyde dehydrogenase, dimeric NADP-preferring), also named as ALDH3, is a member of the ALDH superfamily, which consists of NAD(P)⁺-dependent enzymes that catalyse the oxidation of a wide variety of endogenously produced and exogenous aldehydes to their corresponding acids. It is expressed at high concentrations in the mammalian cornea and it is believed that it protects this vital tissue and the rest of the eye against UV light-induced damage. (PMID:12943535). It can exist as a dimer (PMID:16919242).

Notable Publications

Author	Pubmed ID	Journal	Application
Jing Ma	25190659	Invest Ophthalmol Vis Sci	WB, IHC
Beau J Fenner	31632999	Eye Vis (Lond)	FC
Yu-Show Fu	35625862	Biomedicines	IHC

Storage

Storage:
Store at -20°C. Stable for one year after shipment.
Storage Buffer:
PBS with 0.02% sodium azide and 50% glycerol pH 7.3.
Aliquoting is unnecessary for -20°C storage

*** 20ul sizes contain 0.1% BSA

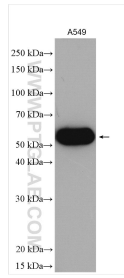
For technical support and original validation data for this product please contact:

T: 1 (888) 4PTGLAB (1-888-478-4522) (toll free in USA), or 1(312) 455-8498 (outside USA)

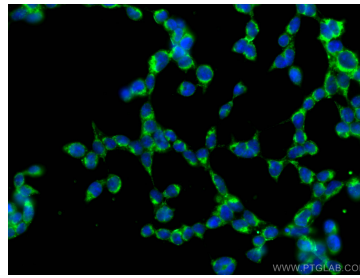
E: proteintech@ptglab.com
W: ptglab.com

This product is exclusively available under Proteintech Group brand and is not available to purchase from any other manufacturer.

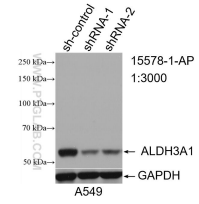
Selected Validation Data



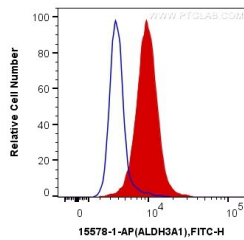
A549 cells were subjected to SDS PAGE followed by western blot with 15578-1-AP (ALDH3A1 antibody) at dilution of 1:50000 incubated at room temperature for 1.5 hours.



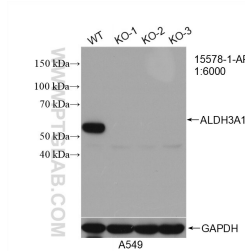
Immunofluorescent analysis of (-20°C Ethanol) fixed HEK-293T cells using ALDH3A1 antibody (15578-1-AP) at dilution of 1:200 and CoraLite®488-Conjugated AffiniPure Goat Anti-Rabbit IgG(H+L).



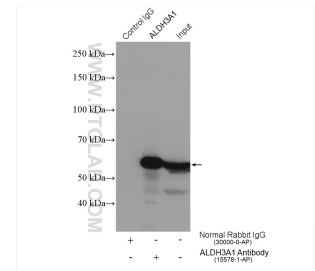
WB result of ALDH3A1 antibody (15578-1-AP; 1:3000; incubated at room temperature for 1.5 hours) with sh-Control and sh-ALDH3A1 transfected A549 cells.



1X10⁶ HEK-293 cells were intracellularly stained with 0.25 ug Anti-Human ALDH3A1 (15578-1-AP) and CoraLite®488-Conjugated AffiniPure Goat Anti-Rabbit IgG(H+L) at dilution 1:1000 (red), or 0.25 ug Control Antibody. Cells were fixed with 4% PFA and permeabilized with Flow Cytometry Perm Buffer (PF00011-C).



WB result of ALDH3A1 antibody (15578-1-AP; 1:6000; room temperature for 1.5 hours) with wild-type and ALDH3A1 knockout A549 cells.



IP result of anti-ALDH3A1(IP:15578-1-AP, 4ug; Detection:15578-1-AP 1:3000) with A549 cells lysate 1480 ug.