

For Research Use Only

CBX2 Polyclonal antibody

Catalog Number: 15579-1-AP

Featured Product

6 Publications



Basic Information

Catalog Number: 15579-1-AP	GenBank Accession Number: BC004252	Purification Method: Antigen affinity purification
Size: 150ul , Concentration: 650 µg/ml by Nanodrop;	GeneID (NCBI): 84733	Recommended Dilutions: WB 1:1000-1:8000
Source: Rabbit	Full Name: chromobox homolog 2 (Pc class homolog, Drosophila)	
Isotype: IgG	Calculated MW: 56 kDa	
Immunogen Catalog Number: AG7979	Observed MW: 65-70 kDa	

Applications

Tested Applications: WB, ELISA	Positive Controls: WB : HEK-293 cells, mouse heart tissue, HeLa cells, MCF-7 cells, rat heart tissue
Cited Applications: IF, IHC, WB	
Species Specificity: Human, Mouse, Rat	
Cited Species: human, mouse	

Background Information

The chromobox homologue protein 2 (CBX2) is a critical component of the PRC1 complex involved in antiviral innate immunity, neuronal, and gonadal differentiation, axial patterning during embryonic development, cell proliferation, and senescence (PMID: 32870972). CBX2 has 2 isoforms with the molecular mass of 23 and 56 kDa. Sometimes higher molecular weight around 65-70 kDa can also be observed, which may be a modified variant of CBX2.

Notable Publications

Author	Pubmed ID	Journal	Application
Xun Huang	30220457	Cell	WB
Shipeng Zheng	30972192	Am J Transl Res	WB,IHC
Chenyun He	37829803	Heliyon	WB

Storage

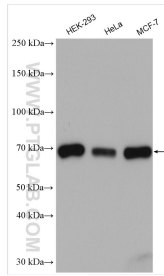
Storage:
Store at -20°C. Stable for one year after shipment.
Storage Buffer:
PBS with 0.02% sodium azide and 50% glycerol pH 7.3.
Aliquoting is unnecessary for -20°C storage

*** 20ul sizes contain 0.1% BSA

For technical support and original validation data for this product please contact:
T: 1 (888) 4PTGLAB (1-888-478-4522) (toll free in USA), or 1(312) 455-8498 (outside USA)
E: proteintech@ptglab.com
W: ptglab.com

This product is exclusively available under Proteintech Group brand and is not available to purchase from any other manufacturer.

Selected Validation Data



Various lysates were subjected to SDS PAGE followed by western blot with 15579-1-AP (CBX2 antibody) at dilution of 1:4000 incubated at room temperature for 1.5 hours.