

For Research Use Only

PCGF1 Polyclonal antibody

Catalog Number: 15581-1-AP



Basic Information

Catalog Number: 15581-1-AP	GenBank Accession Number: BC004952	Purification Method: Antigen affinity purification
Size: 150ul , Concentration: 600 ug/ml by Nanodrop;	GeneID (NCBI): 84759	Recommended Dilutions: WB 1:500-1:3000
Source: Rabbit	UNIPROT ID: Q9BSM1	
Isotype: IgG	Full Name: polycomb group ring finger 1	
Immunogen Catalog Number: AG7983	Calculated MW: 30 kDa	
	Observed MW: 30-31 kDa	

Applications

Tested Applications: WB, ELISA	Positive Controls: WB : Jurkat cells,
Species Specificity: human	

Background Information

PCGF1 (Polycomb group RING finger protein 1), also known as NSPC1. It is expected to be located in the nucleus. Human and mouse NSPc1 genes encode proteins with an N-terminal RING finger domain and share homology with *Drosophila melanogaster* lethal(3)73Ah and the mammalian Mel18 and Bmi1 genes. Transcripts are observed at 10 dpc in the otic vesicle, urogenital bud and dorsal root ganglia. At 11.5 dpc, transcripts are present in a subset of neural crest cell derivatives of the peripheral nervous system, and in the neural tube. NSPc1 expression is ubiquitous in adult tissue (PMID: 11287196). The molecular weight of PCGF1 is 30 kDa.

Storage

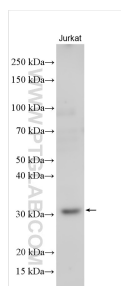
Storage:
Store at -20°C. Stable for one year after shipment.
Storage Buffer:
PBS with 0.02% sodium azide and 50% glycerol pH 7.3.
Aliquoting is unnecessary for -20°C storage

*** 20ul sizes contain 0.1% BSA

For technical support and original validation data for this product please contact:
T: 1 (888) 4PTGLAB (1-888-478-4522) (toll free in USA), or 1(312) 455-8498 (outside USA)
E: proteintech@ptglab.com
W: ptglab.com

This product is exclusively available under Proteintech Group brand and is not available to purchase from any other manufacturer.

Selected Validation Data



Various lysates were subjected to SDS PAGE followed by western blot with 15581-1-AP (PCGF1 antibody) at dilution of 1:1500 incubated at room temperature for 1.5 hours.