

For Research Use Only

HIG2 Polyclonal antibody, PBS Only

Catalog Number:15587-1-PBS



Basic Information

Catalog Number:

15587-1-PBS

Size:

100ug, Concentration: 1 mg/ml by Nanodrop;

Source:

Rabbit

Isotype:

IgG

Immunogen Catalog Number:

AG7829

GenBank Accession Number:

BC001863

GeneID (NCBI):

29923

UNIPROT ID:

Q9Y5L2

Full Name:

chromosome 7 open reading frame 68

Calculated MW:

7 kDa

Observed MW:

7-10 kDa

Purification Method:

Antigen affinity purification

Applications

Tested Applications:

WB, IHC, IF/ICC, Indirect ELISA

Species Specificity:

human

Background Information

HIG2 (Hypoxia inducible gene 2), also known as hypoxia inducible lipid droplet associated (HILPDA), is a gene that plays a significant role in the context of hypoxia, particularly in cancer biology. HIG2 is can be induced by hypoxia and glucose deprivation. It is expressed under low-oxygen conditions, which are common in the tumor microenvironment, and has been identified as a target gene of hypoxia-inducible factor-1 (HIF-1). HIG2 is implicated in the development and progression of various types of cancer, including renal cell carcinoma(PMID: 15930302), cell lymphoma(PMID: 26757780), epithelial ovarian cancer(PMID: 20134266), and uterine cancer(PMID: 21614900). Its expression is often elevated in these cancers and is associated with poor prognosis.

Storage

Storage:

Store at -80°C.

Storage Buffer:

PBS only, pH7.3

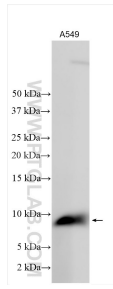
For technical support and original validation data for this product please contact:

T: 1 (888) 4PTGLAB (1-888-478-4522) (toll free in USA), or 1(312) 455-8498 (outside USA)

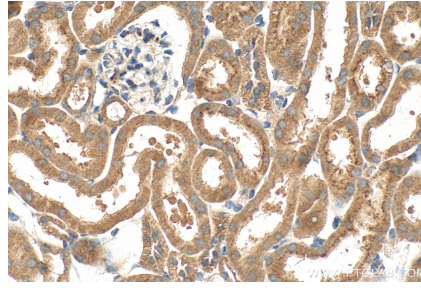
E: proteintech@ptglab.com
W: ptglab.com

This product is exclusively available under Proteintech Group brand and is not available to purchase from any other manufacturer.

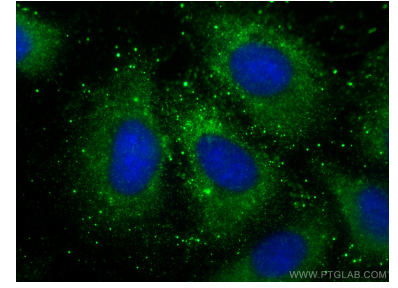
Selected Validation Data



Various lysates were subjected to SDS PAGE followed by western blot with 15587-1-AP (HIG2 antibody) at dilution of 1:500 incubated at room temperature for 1.5 hours. This data was developed using the same antibody clone with 15587-1-PBS in a different storage buffer formulation.



Immunohistochemical analysis of paraffin-embedded mouse kidney tissue slide using 15587-1-AP (HIG2 antibody) at dilution of 1:200 (under 40x lens). Heat mediated antigen retrieval with Tris-EDTA buffer (pH 9.0). This data was developed using the same antibody clone with 15587-1-PBS in a different storage buffer formulation.



Immunofluorescent analysis of (-20°C Methanol) fixed A549 cells using HIG2 antibody (15587-1-AP) at dilution of 1:400 and CoraLite®488-Conjugated AffiniPure Goat Anti-Rabbit IgG(H+L) (SA00013-2). This data was developed using the same antibody clone with 15587-1-PBS in a different storage buffer formulation.