

For Research Use Only

# SELS Polyclonal antibody, PBS Only

Catalog Number: 15591-1-PBS

Featured Product



## Basic Information

**Catalog Number:**

15591-1-PBS

**Size:**

100ug, Concentration: 1 mg/ml by Nanodrop;

**Source:**

Rabbit

**Isotype:**

IgG

**Immunogen Catalog Number:**

AG7928

**GenBank Accession Number:**

BC005840

**GeneID (NCBI):**

55829

**UNIPROT ID:**

Q9BQE4

**Full Name:**

selenoprotein S

**Calculated MW:**

21 kDa

**Observed MW:**

21 kDa

**Purification Method:**

Antigen affinity purification

## Applications

**Tested Applications:**

WB, IHC, IP, Indirect ELISA

**Species Specificity:**

human, mouse, rat

## Background Information

SELS, also named as VIMP and SEPS1, plays an important role in the production of inflammatory cytokines and its expression is activated by endoplasmic reticulum (ER) stress. It probably acts by serving as a linker between DERL1 and VCP.

## Storage

**Storage:**

Store at -80°C.

**Storage Buffer:**

PBS Only

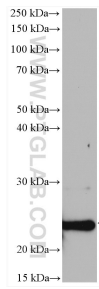
For technical support and original validation data for this product please contact:

T: 1 (888) 4PTGLAB (1-888-478-4522) (toll free in USA), or 1(312) 455-8498 (outside USA)

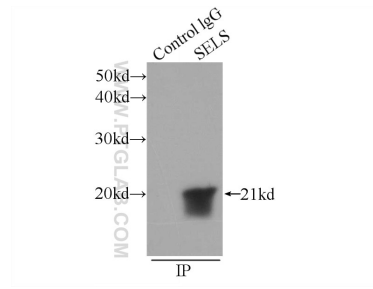
E: [proteintech@ptglab.com](mailto:proteintech@ptglab.com)  
W: [ptglab.com](http://ptglab.com)

This product is exclusively available under Proteintech Group brand and is not available to purchase from any other manufacturer.

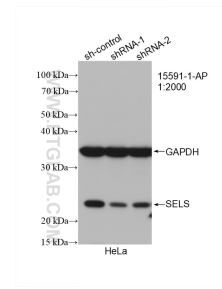
## Selected Validation Data



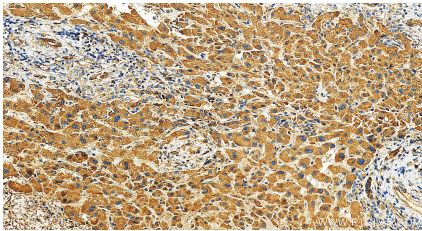
rat brain tissue were subjected to SDS PAGE followed by western blot with 15591-1-AP (SELS antibody) at dilution of 1:1000 incubated at room temperature for 1.5 hours. This data was developed using the same antibody clone with 15591-1-PBS in a different storage buffer formulation.



IP result of anti-SELS (IP:15591-1-AP, 3ug; Detection:15591-1-AP 1:500) with HepG2 cells lysate 600ug. This data was developed using the same antibody clone with 15591-1-PBS in a different storage buffer formulation.



WB result of SELS antibody (15591-1-AP; 1:2000; incubated at room temperature for 1.5 hours) with sh-Control and sh-SELS transfected HeLa cells. This data was developed using the same antibody clone with 15591-1-PBS in a different storage buffer formulation.



Immunohistochemical analysis of paraffin-embedded human intrahepatic cholangiocarcinoma tissue slide using 15591-1-AP (SELS antibody) at dilution of 1:200 (under 20x lens). Heat mediated antigen retrieval with Tris-EDTA buffer (pH 9.0). This data was developed using the same antibody clone with 15591-1-PBS in a different storage buffer formulation.