

For Research Use Only

# CDCA3 Polyclonal antibody

Catalog Number: 15594-1-AP

Featured Product

9 Publications



## Basic Information

### Catalog Number:

15594-1-AP

### Size:

150ul, Concentration: 550 ug/ml by Nanodrop;

### Source:

Rabbit

### Isotype:

IgG

### Immunogen Catalog Number:

AG7951

### GenBank Accession Number:

BC002551

### GeneID (NCBI):

83461

### UNIPROT ID:

Q99618

### Full Name:

cell division cycle associated 3

### Calculated MW:

29 kDa

### Purification Method:

Antigen affinity purification

### Recommended Dilutions:

IHC 1:50-1:500

IF/ICC 1:200-1:800

## Applications

### Tested Applications:

IHC, IF/ICC, ELISA

### Cited Applications:

WB, IHC, IF, CoIP

### Species Specificity:

human

### Cited Species:

human

**Note-IHC: suggested antigen retrieval with TE buffer pH 9.0; (\*) Alternatively, antigen retrieval may be performed with citrate buffer pH 6.0**

### Positive Controls:

IHC : human breast cancer tissue, human liver cancer tissue

IF/ICC : A431 cells,

## Background Information

CDCA3, also named C8, GRCC8, and TOME1, is an F-box-like protein required for entry into mitosis. It acts by participating in E3 ligase complexes that mediate the ubiquitination and degradation of WEE1 kinase at the G2/M phase.

## Notable Publications

Author	Pubmed ID	Journal	Application
Yuanyuan Bai	36213833	J Oncol	WB,IF
Dexin Shen	33980246	Cancer Cell Int	IHC
Xueying Wang	34103682	Oncogene	WB

## Storage

### Storage:

Store at -20°C. Stable for one year after shipment.

### Storage Buffer:

PBS with 0.02% sodium azide and 50% glycerol pH 7.3.

Aliquoting is unnecessary for -20°C storage

\*\*\* 20ul sizes contain 0.1% BSA

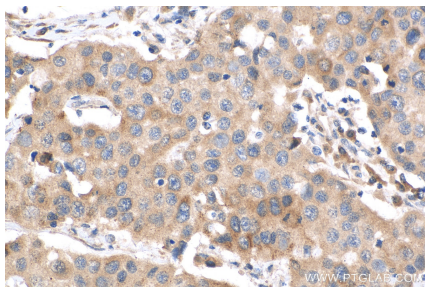
For technical support and original validation data for this product please contact:

T: 1 (888) 4PTGLAB (1-888-478-4522) (toll free in USA), or 1(312) 455-8498 (outside USA)

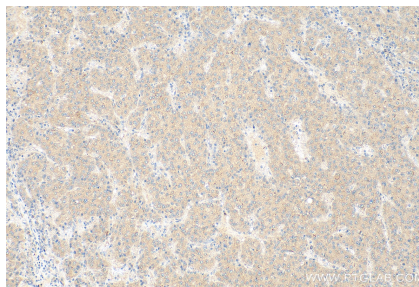
E: [proteintech@ptglab.com](mailto:proteintech@ptglab.com)  
W: [ptglab.com](http://ptglab.com)

This product is exclusively available under Proteintech Group brand and is not available to purchase from any other manufacturer.

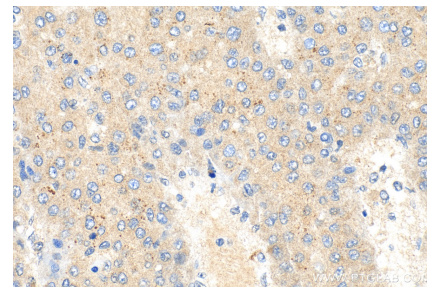
## Selected Validation Data



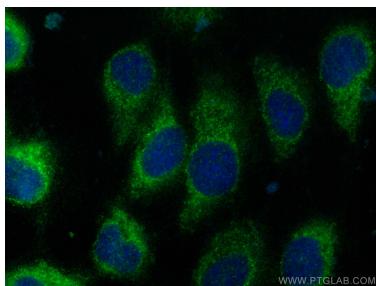
Immunohistochemical analysis of paraffin-embedded human breast cancer tissue slide using 15594-1-AP (CDCA3 antibody) at dilution of 1:200 (under 40x lens). Heat mediated antigen retrieval with Tris-EDTA buffer (pH 9.0).



Immunohistochemical analysis of paraffin-embedded human liver cancer tissue slide using 15594-1-AP (CDCA3 antibody) at dilution of 1:200 (under 10x lens). Heat mediated antigen retrieval with Tris-EDTA buffer (pH 9.0).



Immunohistochemical analysis of paraffin-embedded human liver cancer tissue slide using 15594-1-AP (CDCA3 antibody) at dilution of 1:200 (under 40x lens). Heat mediated antigen retrieval with Tris-EDTA buffer (pH 9.0).



Immunofluorescent analysis of (-20°C Methanol) fixed A431 cells using CDCA3 antibody (15594-1-AP) at dilution of 1:400 and CoraLite®488-Conjugated AffiniPure Goat Anti-Rabbit IgG(H+L) (SA00013-2).