

For Research Use Only

SF3A2 Polyclonal antibody

Catalog Number: 15596-1-AP **2 Publications**



Basic Information

Catalog Number: 15596-1-AP	GenBank Accession Number: BC004434	Purification Method: Antigen affinity purification
Size: 150ul , Concentration: 500 µg/ml by Nanodrop;	GeneID (NCBI): 8175	Recommended Dilutions: WB 1:500-1:2000 IHC 1:20-1:200
Source: Rabbit	Full Name: splicing factor 3a, subunit 2, 66kDa	
Isotype: IgG	Calculated MW: 66 kDa	
Immunogen Catalog Number: AG7953	Observed MW: 66 kDa	

Applications

Tested Applications: IHC, WB, ELISA	Positive Controls: WB : NIH/3T3 cells, HeLa cells IHC : human endometrial cancer tissue,
Cited Applications: CoIP, IF, IP, WB	
Species Specificity: human, mouse, rat	
Cited Species: human, rat	

Note-IHC: suggested antigen retrieval with TE buffer pH 9.0; (*) Alternatively, antigen retrieval may be performed with citrate buffer pH 6.0

Background Information

Notable Publications

Author	Pubmed ID	Journal	Application
Zhe Chen	28878014	J Biol Chem	IP
Qingxia Huang	38101749	J Adv Res	WB, IF, CoIP

Storage

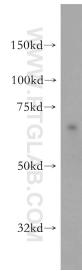
Storage:
Store at -20°C. Stable for one year after shipment.
Storage Buffer:
PBS with 0.02% sodium azide and 50% glycerol pH 7.3.
Aliquoting is unnecessary for -20°C storage

***** 20ul sizes contain 0.1% BSA**

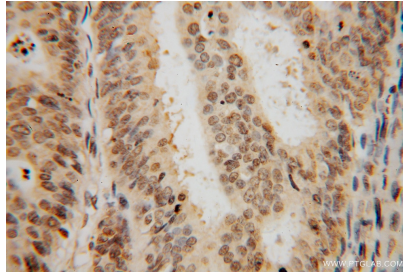
For technical support and original validation data for this product please contact:
T: 1 (888) 4PTGLAB (1-888-478-4522) (toll free in USA), or 1(312) 455-8498 (outside USA)
E: proteintech@ptglab.com
W: ptglab.com

This product is exclusively available under Proteintech Group brand and is not available to purchase from any other manufacturer.

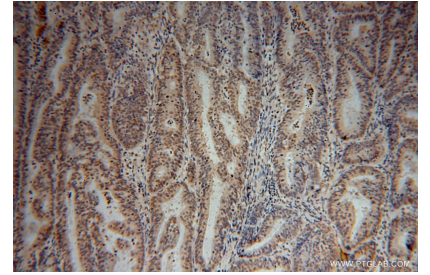
Selected Validation Data



NIH/3T3 cells were subjected to SDS PAGE followed by western blot with 15596-1-AP (SF3A2 antibody) at dilution of 1:400 incubated at room temperature for 1.5 hours.



Immunohistochemical analysis of paraffin-embedded human endometrial cancer using 15596-1-AP (SF3A2 antibody) at dilution of 1:50 (under 40x lens).



Immunohistochemical analysis of paraffin-embedded human endometrial cancer using 15596-1-AP (SF3A2 antibody) at dilution of 1:50 (under 10x lens).