

For Research Use Only

RPS16 Polyclonal antibody

Catalog Number: 15603-1-AP

3 Publications



Basic Information

Catalog Number:

15603-1-AP

Size:

150ul, Concentration: 260 ug/ml by Nanodrop and 187 ug/ml by Bradford method using BSA as the standard;

Source:

Rabbit

Isotype:

IgG

Immunogen Catalog Number:

AG7986

GenBank Accession Number:

BC004324

GeneID (NCBI):

6217

UNIPROT ID:

P62249

Full Name:

ribosomal protein S16

Calculated MW:

16 kDa

Observed MW:

16 kDa

Purification Method:

Antigen affinity purification

Recommended Dilutions:

WB 1:500-1:1000

IHC 1:20-1:200

IF/ICC 1:10-1:100

Applications

Tested Applications:

WB, IHC, IF/ICC, ELISA

Cited Applications:

WB, IHC

Species Specificity:

human, mouse

Cited Species:

human

Note-IHC: suggested antigen retrieval with TE buffer pH 9.0; (*) Alternatively, antigen retrieval may be performed with citrate buffer pH 6.0

Positive Controls:

WB : HeLa cells, Jurkat cells

IHC : human breast cancer tissue,

IF/ICC : MCF-7 cells,

Background Information

RPS16, the 40S ribosomal protein S16, belongs to the ribosomal protein S9P family. It is located in the cytoplasm and can be acetylated. RPS16 is extensively involved in rRNA processing, translational elongation, initiation and termination via its RNA binding activity. Catalog#15603-1-AP is a rabbit polyclonal antibody raised against full-length RPS16 of human origin.

Notable Publications

Author	Pubmed ID	Journal	Application
Matthew J Knarr	39561220	Sci Signal	WB
Lida Suo	37956648	Int J Biol Markers	IHC
Huang Rui R	22821915	Proteomics Clin Appl	WB

Storage

Storage:

Store at -20°C. Stable for one year after shipment.

Storage Buffer:

PBS with 0.02% sodium azide and 50% glycerol pH 7.3.

Aliquoting is unnecessary for -20°C storage

*** 20ul sizes contain 0.1% BSA

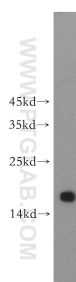
For technical support and original validation data for this product please contact:

T: 1 (888) 4PTGLAB (1-888-478-4522) (toll free in USA), or 1(312) 455-8498 (outside USA)

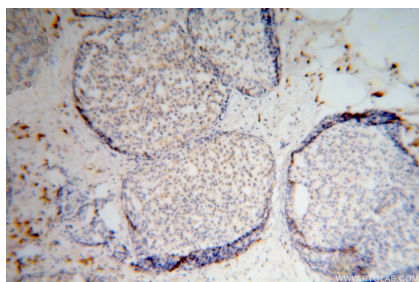
E: proteintech@ptglab.com
W: ptglab.com

This product is exclusively available under Proteintech Group brand and is not available to purchase from any other manufacturer.

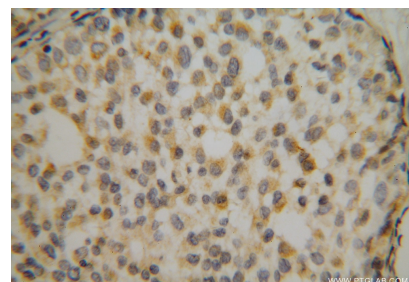
Selected Validation Data



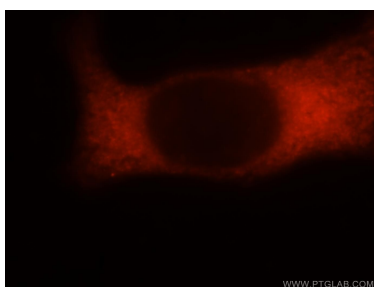
HeLa cells were subjected to SDS PAGE followed by western blot with 15603-1-AP (RPS16 antibody) at dilution of 1:500 incubated at room temperature for 1.5 hours.



Immunohistochemical analysis of paraffin-embedded human breast cancer using 15603-1-AP (RPS16 antibody) at dilution of 1:50 (under 10x lens).



Immunohistochemical analysis of paraffin-embedded human breast cancer using 15603-1-AP (RPS16 antibody) at dilution of 1:50 (under 40x lens).



Immunofluorescent analysis of MCF-7 cells, using RPS16 antibody 15603-1-AP at 1:25 dilution and Rhodamine-labeled goat anti-rabbit IgG (red).