

AKAP1 Polyclonal antibody

Catalog Number: 15618-1-AP

2 Publications

Basic Information

Catalog Number: 15618-1-AP	GenBank Accession Number: BC000729	Purification Method: Antigen affinity purification
Size: 150ul, Concentration: 450 µg/ml by Nanodrop and 240 µg/ml by Bradford method using BSA as the standard;	GeneID (NCBI): 8165	Recommended Dilutions: WB 1:500-1:2000 IP 0.5-4.0 ug for IP and 1:1000-1:4000 for WB
Source: Rabbit	Full Name: A kinase (PRKA) anchor protein 1	IHC 1:50-1:500 IF 1:10-1:100
Isotype: IgG	Calculated MW: 97 kDa	
Immunogen Catalog Number: AG8037	Observed MW: 149 kDa	

Applications

Tested Applications: FC, IF, IHC, IP, WB, ELISA	Positive Controls:
Cited Applications: IF, IP, WB	WB: HeLa cells, human liver tissue, MCF-7 cells, PC-3 cells
Species Specificity: human	IP: PC-3 cells,
Cited Species: human	IHC: human lung cancer tissue, human prostate cancer tissue, human colon cancer tissue, human small intestine tissue
Note-IHC: suggested antigen retrieval with TE buffer pH 9.0; (*) Alternatively, antigen retrieval may be performed with citrate buffer pH 6.0	IF: MCF-7 cells,

Background Information

AKAP1 (also termed AKAP149) is a human 149 kDa anchoring protein localized in mitochondria and the endoplasmic reticulum/nuclear envelope (ER-NE) network. It binds to type I and II regulatory subunits of protein kinase A and anchors them to the cytoplasmic face of the mitochondrial outer membrane. This protein is speculated to be involved in the cAMP-dependent signal transduction pathway and in directing RNA to a specific cellular compartment.

Notable Publications

Author	Pubmed ID	Journal	Application
Wenxian Wu	27145933	EMBO J	WB
Grozdanov Petar N PN	23077346	Mol Endocrinol	WB, IP, IF

Storage

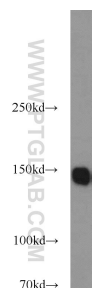
Storage:
Store at -20°C. Stable for one year after shipment.
Storage Buffer:
PBS with 0.02% sodium azide and 50% glycerol pH 7.3.
 Aliquoting is unnecessary for -20°C storage

*** 20ul sizes contain 0.1% BSA

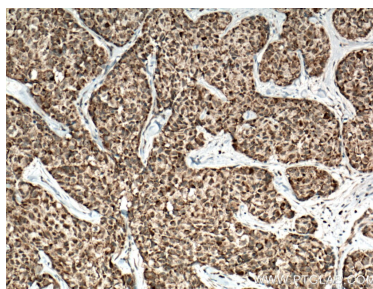
For technical support and original validation data for this product please contact:
 T: 1 (888) 4PTGLAB (1-888-478-4522) (toll free in USA), or 1(312) 455-8498 (outside USA)
 E: proteintech@ptglab.com
 W: ptglab.com

This product is exclusively available under Proteintech Group brand and is not available to purchase from any other manufacturer.

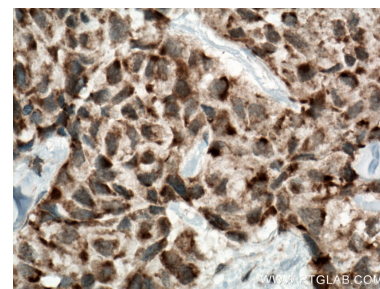
Selected Validation Data



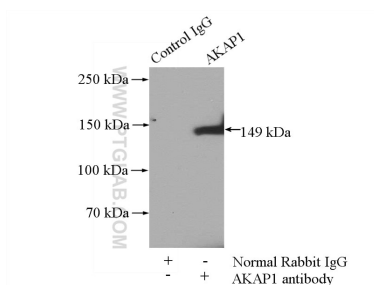
HeLa cells were subjected to SDS PAGE followed by western blot with 15618-1-AP (AKAP1 antibody) at dilution of 1:1000 incubated at room temperature for 1.5 hours.



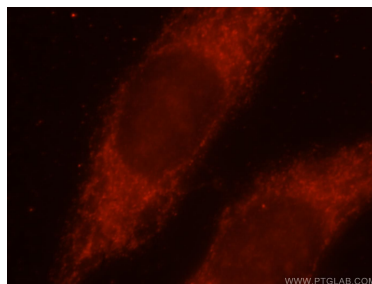
Immunohistochemical analysis of paraffin-embedded human lung cancer tissue slide using 15618-1-AP (AKAP1 antibody) at dilution of 1:200 (under 10x lens. Heat mediated antigen retrieval with Tris-EDTA buffer (pH 9.0).



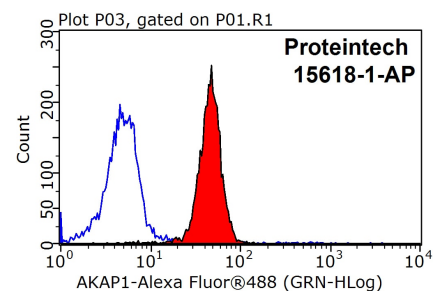
Immunohistochemical analysis of paraffin-embedded human lung cancer tissue slide using 15618-1-AP (AKAP1 antibody) at dilution of 1:200 (under 40x lens. Heat mediated antigen retrieval with Tris-EDTA buffer (pH 9.0).



IP Result of anti-AKAP1 (IP:15618-1-AP, 4ug; Detection:15618-1-AP 1:2000) with PC-3 cells lysate 1800ug.



Immunofluorescent analysis of MCF-7 cells, using AKAP1 antibody 15618-1-AP at 1:25 dilution and Rhodamine-labeled goat anti-rabbit IgG (red).



1X10⁶ MCF-7 cells were stained with 0.2ug AKAP1 antibody (15618-1-AP, red) and control antibody (blue). Fixed with 90% MeOH blocked with 3% BSA (30 min). Alexa Fluor 488-conjugated AffiniPure Goat Anti-Rabbit IgG(H+L) with dilution 1:1500.