

For Research Use Only

# AKAP1 Polyclonal antibody, PBS Only

Catalog Number:15618-1-PBS



## Basic Information

**Catalog Number:**

15618-1-PBS

**Size:**

100ug , Concentration: 1 mg/ml by Nanodrop;

**Source:**

Rabbit

**Isotype:**

IgG

**Immunogen Catalog Number:**

AG8037

**GenBank Accession Number:**

BC000729

**GeneID (NCBI):**

8165

**UNIPROT ID:**

Q92667

**Full Name:**

A kinase (PRKA) anchor protein 1

**Calculated MW:**

97 kDa

**Observed MW:**

149 kDa

**Purification Method:**

Antigen affinity purification

## Applications

**Tested Applications:**

WB, IHC, IF/ICC, IP, Indirect ELISA

**Species Specificity:**

human

## Background Information

AKAP1 (also termed AKAP149) is a human 149 kDa anchoring protein localized in mitochondria and the endoplasmic reticulum/nuclear envelope (ER-NE) network. It binds to type I and II regulatory subunits of protein kinase A and anchors them to the cytoplasmic face of the mitochondrial outer membrane. This protein is speculated to be involved in the cAMP-dependent signal transduction pathway and in directing RNA to a specific cellular compartment.

## Storage

**Storage:**

Store at -80°C.

**Storage Buffer:**

PBS Only

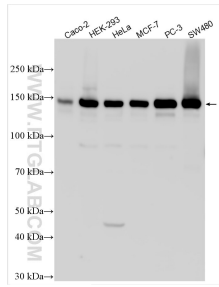
For technical support and original validation data for this product please contact:

T: 1 (888) 4PTGLAB (1-888-478-4522) (toll free in USA), or 1(312) 455-8498 (outside USA)

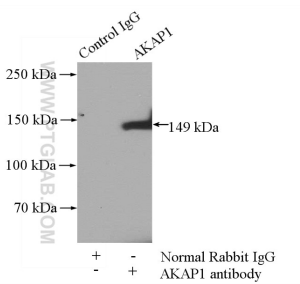
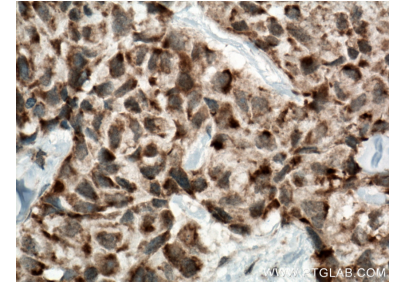
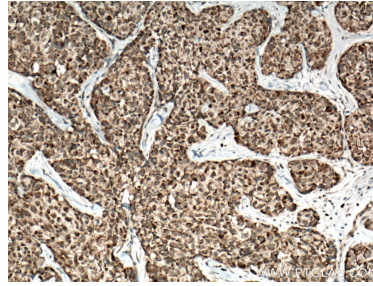
E: [proteintech@ptglab.com](mailto:proteintech@ptglab.com)  
W: [ptglab.com](http://ptglab.com)

**This product is exclusively available under Proteintech Group brand and is not available to purchase from any other manufacturer.**

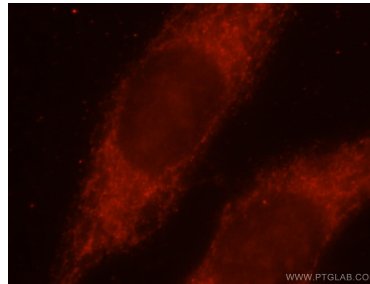
## Selected Validation Data



Various lysates were subjected to SDS PAGE followed by western blot with 15618-1-AP (AKAP1 antibody) at dilution of 1:2000 incubated at room temperature for 1.5 hours. This data was developed using the same antibody clone with 15618-1-PBS in a different storage buffer formulation.



IP result of anti-AKAP1 (IP: 15618-1-AP, 4ug; Detection: 15618-1-AP 1:2000) with PC-3 cells lysate 1800ug. This data was developed using the same antibody clone with 15618-1-PBS in a different storage buffer formulation.



Immunofluorescent analysis of MCF-7 cells, using AKAP1 antibody 15618-1-AP at 1:25 dilution and Rhodamine-labeled goat anti-rabbit IgG (red). This data was developed using the same antibody clone with 15618-1-PBS in a different storage buffer formulation.