

For Research Use Only

# NSFL1C Polyclonal antibody

Catalog Number: 15620-1-AP

Featured Product

5 Publications



## Basic Information

### Catalog Number:

15620-1-AP

### Size:

150ul, Concentration: 350 ug/ml by Nanodrop and 293 ug/ml by Bradford method using BSA as the standard;

### Source:

Rabbit

### Isotype:

IgG

### Immunogen Catalog Number:

AG8040

### GenBank Accession Number:

BC002801

### GeneID (NCBI):

55968

### UNIPROT ID:

Q9UNZ2

### Full Name:

NSFL1 (p97) cofactor (p47)

### Calculated MW:

41 kDa

### Observed MW:

47 kDa, 41 kDa

### Purification Method:

Antigen affinity purification

### Recommended Dilutions:

WB 1:500-1:1000

IP 0.5-4.0 ug for 1.0-3.0 mg of total protein lysate

IHC 1:50-1:500

## Applications

### Tested Applications:

WB, IP, IHC, ELISA

### Cited Applications:

WB, IF

### Species Specificity:

human, mouse

### Cited Species:

human, mouse

**Note-IHC: suggested antigen retrieval with TE buffer pH 9.0; (\*) Alternatively, antigen retrieval may be performed with citrate buffer pH 6.0**

### Positive Controls:

WB : A431 cells, HEK-293 cells, mouse liver tissue

IP : HEK-293 cells,

IHC : human lung cancer tissue, human liver cancer tissue

## Notable Publications

Author	Pubmed ID	Journal	Application
Tao Wang	27226613	J Biol Chem	WB
Xiaoyi Zhang	25775548	Proc Natl Acad Sci U S A	WB
Sirisha Mukkavalli	33712450	J Cell Sci	WB,IF

## Storage

### Storage:

Store at -20°C. Stable for one year after shipment.

### Storage Buffer:

PBS with 0.02% sodium azide and 50% glycerol pH 7.3.

Aliquoting is unnecessary for -20°C storage

\*\*\* 20ul sizes contain 0.1% BSA

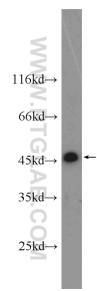
For technical support and original validation data for this product please contact:

T: 1 (888) 4PTGLAB (1-888-478-4522) (toll free in USA), or 1(312) 455-8498 (outside USA)

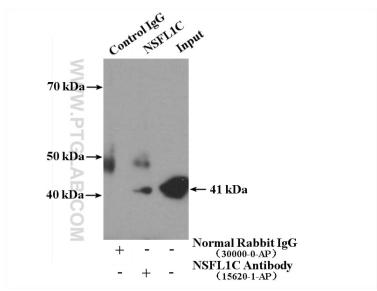
E: [proteintech@ptglab.com](mailto:proteintech@ptglab.com)  
W: [ptglab.com](http://ptglab.com)

This product is exclusively available under Proteintech Group brand and is not available to purchase from any other manufacturer.

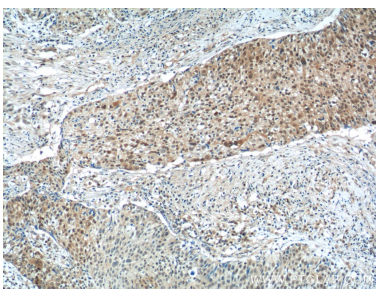
Selected Validation Data



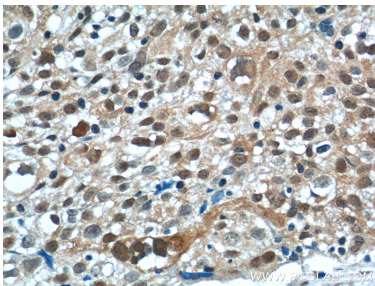
A431 cells were subjected to SDS PAGE followed by western blot with 15620-1-AP (NSFL1C antibody) at dilution of 1:800 incubated at room temperature for 1.5 hours.



IP result of anti-NSFL1C (IP:15620-1-AP, 4ug; Detection:15620-1-AP 1:1000) with HEK-293 cells lysate 2640ug.



Immunohistochemical analysis of paraffin-embedded human lung cancer tissue slide using 15620-1-AP (NSFL1C Antibody) at dilution of 1:50 (under 10x lens).



Immunohistochemical analysis of paraffin-embedded human lung cancer tissue slide using 15620-1-AP (NSFL1C Antibody) at dilution of 1:50 (under 40x lens).