

For Research Use Only

# Carboxypeptidase A2 Polyclonal antibody



Catalog Number: 15626-1-AP

1 Publications

## Basic Information

<b>Catalog Number:</b> 15626-1-AP	<b>GenBank Accession Number:</b> BC014571	<b>Purification Method:</b> Antigen affinity purification
<b>Size:</b> 150ul , Concentration: 300 µg/ml by Nanodrop and 180 µg/ml by Bradford method using BSA as the standard;	<b>GeneID (NCBI):</b> 1358	<b>Recommended Dilutions:</b> WB 1:1000-1:4000 IHC 1:20-1:200
<b>Source:</b> Rabbit	<b>Full Name:</b> carboxypeptidase A2 (pancreatic)	
<b>Isotype:</b> IgG	<b>Calculated MW:</b> 47 kDa	
<b>Immunogen Catalog Number:</b> AG8080	<b>Observed MW:</b> 46 kDa	

## Applications

<b>Tested Applications:</b> IHC, WB, ELISA	<b>Positive Controls:</b>
<b>Cited Applications:</b> IHC, WB	<b>WB :</b> mouse pancreas tissue,
<b>Species Specificity:</b> human, mouse, rat	<b>IHC :</b> human pancreas tissue,
<b>Cited Species:</b> human	

**Note-IHC: suggested antigen retrieval with TE buffer pH 9.0; (\*) Alternatively, antigen retrieval may be performed with citrate buffer pH 6.0**

## Background Information

### Notable Publications

Author	Pubmed ID	Journal	Application
Yang Song	29631213	Transl Oncol	WB, IHC

## Storage

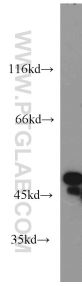
**Storage:**  
Store at -20°C. Stable for one year after shipment.  
**Storage Buffer:**  
PBS with 0.02% sodium azide and 50% glycerol pH 7.3.  
Aliquoting is unnecessary for -20°C storage

\*\*\* 20ul sizes contain 0.1% BSA

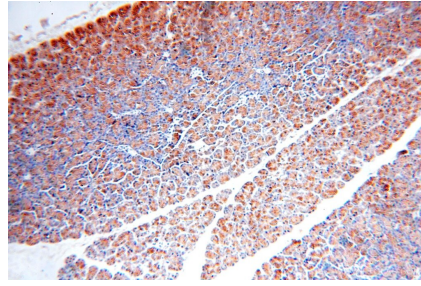
For technical support and original validation data for this product please contact:  
T: 1 (888) 4PTGLAB (1-888-478-4522) (toll free in USA), or 1(312) 455-8498 (outside USA) E: proteintech@ptglab.com W: ptglab.com

This product is exclusively available under Proteintech Group brand and is not available to purchase from any other manufacturer.

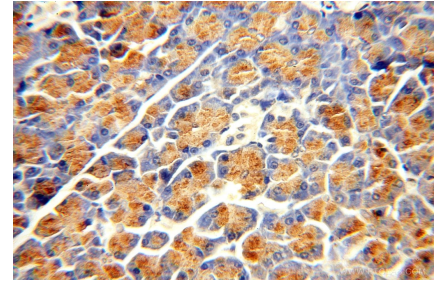
## Selected Validation Data



mouse pancreas tissue were subjected to SDS PAGE followed by western blot with 15626-1-AP (Carboxypeptidase A2 antibody) at dilution of 1:2000 incubated at room temperature for 1.5 hours.



Immunohistochemical analysis of paraffin-embedded human pancreas using 15626-1-AP (Carboxypeptidase A2 antibody) at dilution of 1:100 (under 10x lens).



Immunohistochemical analysis of paraffin-embedded human pancreas using 15626-1-AP (Carboxypeptidase A2 antibody) at dilution of 1:100 (under 40x lens).