

For Research Use Only

EXOSC5 Polyclonal antibody

Catalog Number: 15627-1-AP **3 Publications**



Basic Information

| | | |
|--|--|---|
| Catalog Number: 15627-1-AP | GenBank Accession Number: BC007742 | Purification Method: Antigen affinity purification |
| Size: 150ul , Concentration: 350 µg/ml by Nanodrop and 193 µg/ml by Bradford method using BSA as the standard; | GeneID (NCBI): 56915 | Recommended Dilutions: WB 1:500-1:3000 IP 0.5-4.0 ug for 1.0-3.0 mg of total protein lysate IHC 1:20-1:200 IF 1:350-1:1400 |
| Source: Rabbit | Full Name: exosome component 5 | |
| Isotype: IgG | Calculated MW: 235 aa, 25 kDa | |
| Immunogen Catalog Number: AG8098 | Observed MW: 28-30 kDa | |

Applications

| | |
|---|--|
| Tested Applications: IF, IHC, IP, WB, ELISA | Positive Controls: WB : HEK-293 cells, Raji cells, HeLa cells, K-562 cells IP : HeLa cells, IHC : human breast cancer tissue, IF : MCF-7 cells, |
| Cited Applications: IHC, WB | |
| Species Specificity: human, rat | |
| Cited Species: human | |

Note-IHC: suggested antigen retrieval with TE buffer pH 9.0; (*) Alternatively, antigen retrieval may be performed with citrate buffer pH 6.0

Background Information

CML28 is a component of the human exosome, which is a multiprotein complex involved in the 3' processing and degradation of RNA [PMID:12359762]. CML28 is a novel 28 kDa TAA identified by serological analysis of cDNA expression libraries (SEREX) screening of a chronic myeloid leukemia (CML) cDNA expression library. As a potential target for tumor-specific immunotherapy, CML28 is superior to other known TAAs characterized by its broader spectrum expression in tumor cells and stricter expression in normal tissues [PMID:16815301].

Notable Publications

| Author | Pubmed ID | Journal | Application |
|---------------|-----------|-------------------|-------------|
| Tobias Moll | 36241425 | Life Sci Alliance | WB |
| Yujing Zhang | 36293016 | Int J Mol Sci | IHC |
| Xiangliu Chen | 35371329 | J Cancer | WB,IHC |

Storage

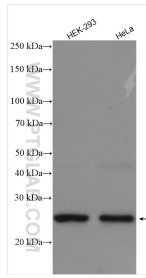
Storage:
Store at -20°C. Stable for one year after shipment.
Storage Buffer:
PBS with 0.02% sodium azide and 50% glycerol pH 7.3.
Aliquoting is unnecessary for -20°C storage

*** 20ul sizes contain 0.1% BSA

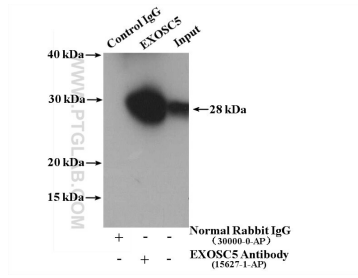
For technical support and original validation data for this product please contact:
T: 1 (888) 4PTGLAB (1-888-478-4522) (toll free in USA), or 1(312) 455-8498 (outside USA)
E: proteintech@ptglab.com
W: ptglab.com

This product is exclusively available under Proteintech Group brand and is not available to purchase from any other manufacturer.

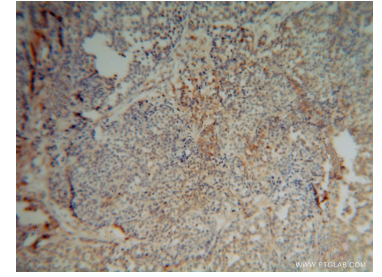
Selected Validation Data



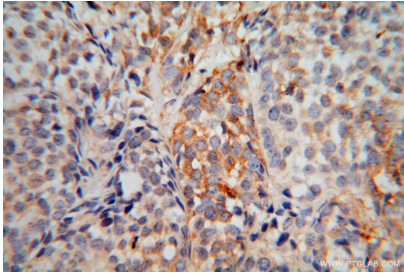
Various lysates were subjected to SDS PAGE followed by western blot with 15627-1-AP (EXOSC5 antibody) at dilution of 1:1500 incubated at room temperature for 1.5 hours.



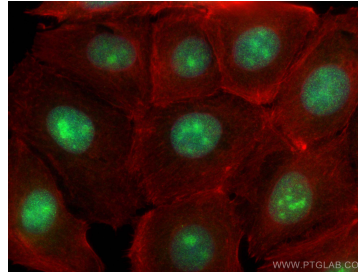
IP result of anti-EXOSC5 (IP:15627-1-AP, 4ug; Detection:15627-1-AP 1:300) with HeLa cells lysate 2800 ug.



Immunohistochemical analysis of paraffin-embedded human breast cancer using 15627-1-AP (EXOSC5 antibody) at dilution of 1:50 (under 10x lens).



Immunohistochemical analysis of paraffin-embedded human breast cancer using 15627-1-AP (EXOSC5 antibody) at dilution of 1:50 (under 40x lens).



Immunofluorescent analysis of (4% PFA) fixed MCF-7 cells using EXOSC5 antibody (15627-1-AP) at dilution of 1:700 and CoraLite® 488-Conjugated AffiniPure Goat Anti-Rabbit IgG(H+L), CL594-phalloidin (red).