

For Research Use Only

# EIF4EBP2 Polyclonal antibody, PBS Only

Catalog Number:15628-1-PBS



## Basic Information

**Catalog Number:**

15628-1-PBS

**Size:**

100ug , Concentration: 1 mg/ml by Nanodrop;

**Source:**

Rabbit

**Isotype:**

IgG

**Immunogen Catalog Number:**

AG8101

**GenBank Accession Number:**

BC005057

**GeneID (NCBI):**

1979

**UNIPROT ID:**

Q13542

**Full Name:**

eukaryotic translation initiation factor 4E binding protein 2

**Calculated MW:**

120 aa, 13 kDa

**Observed MW:**

15-20 kDa

**Purification Method:**

Antigen affinity purification

## Applications

**Tested Applications:**

WB, Indirect ELISA

**Species Specificity:**

human, mouse, rat

## Background Information

EIF4EBP2(Eukaryotic translation initiation factor 4E-binding protein 2), also named as 4EBP2, is a member of the eukaryotic translation initiation factor 4E binding protein family. EIF4EBP2 is enriched in brain and acts as a regulator of synapse activity and neuronal stem cell renewal via its ability to repress translation initiation. EIF4EBP2 is a repressor of translation initiation involved in synaptic plasticity, learning and memory formation (PubMed:30765518).

## Storage

**Storage:**

Store at -80°C.

**Storage Buffer:**

PBS Only

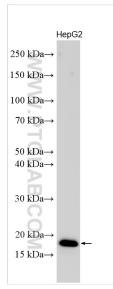
For technical support and original validation data for this product please contact:

T: 1 (888) 4PTGLAB (1-888-478-4522) (toll free in USA), or 1(312) 455-8498 (outside USA)

E: [proteintech@ptglab.com](mailto:proteintech@ptglab.com)  
W: [ptglab.com](http://ptglab.com)

**This product is exclusively available under Proteintech Group brand and is not available to purchase from any other manufacturer.**

## Selected Validation Data



HepG2 cells were subjected to SDS PAGE followed by western blot with 15628-1-AP (EIF4EBP2 antibody) at dilution of 1:2000 incubated at room temperature for 1.5 hours. This data was developed using the same antibody clone with 15628-1-PBS in a different storage buffer formulation.