

For Research Use Only

AP2S1 Polyclonal antibody

Catalog Number: 15634-1-AP

1 Publications



Basic Information

Catalog Number:

15634-1-AP

Size:

150ul, Concentration: 450 ug/ml by Nanodrop;

Source:

Rabbit

Isotype:

IgG

Immunogen Catalog Number:

AG8095

GenBank Accession Number:

BC006337

GeneID (NCBI):

1175

UNIPROT ID:

P53680

Full Name:

adaptor-related protein complex 2, sigma 1 subunit

Calculated MW:

142 aa, 17 kDa

Observed MW:

15-17 kDa

Purification Method:

Antigen affinity purification

Recommended Dilutions:

WB 1:2000-1:16000

Applications

Tested Applications:

WB, ELISA

Cited Applications:

WB

Species Specificity:

human, mouse, rat

Cited Species:

rat

Positive Controls:

WB : mouse brain tissue, rat brain tissue

Background Information

AP2S1 is a component of the adaptor protein complex 2 (AP-2). AP complexes are cytosolic heterotetramers that mediate the sorting of membrane proteins in the secretory and endocytic pathways. AP complexes are involved in the formation of clathrin-coated vesicles (CCVs) by recruiting the scaffold protein, clathrin. AP complexes also play a pivotal role in cargo selection by recognizing the sorting signals within the cytoplasmic tail of integral membrane proteins. AP-2 is composed of two large adaptins (alpha-type subunit AP2A1 or AP2A2 and beta-type subunit AP2B1), a medium adaptin (mu-type subunit AP2M1), and a small adaptin (sigma-type subunit AP2S1). It works on the plasma membrane to internalize cargo in clathrin-mediated endocytosis. Missense mutations of AP2S1 affect Arg15 and lead to familial hypocalciuric hypercalcemia type 3 (FHH3), an extracellular calcium homeostasis disorder affecting the parathyroids, kidneys and bone (PMID: 23222959).

Notable Publications

Author	Pubmed ID	Journal	Application
Cuicui Yang	38990251	Mol Neurobiol	WB

Storage

Storage:

Store at -20°C. Stable for one year after shipment.

Storage Buffer:

PBS with 0.02% sodium azide and 50% glycerol pH 7.3.

Aliquoting is unnecessary for -20°C storage

*** 20ul sizes contain 0.1% BSA

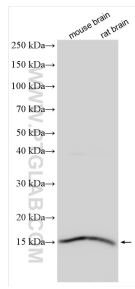
For technical support and original validation data for this product please contact:

T: 1 (888) 4PTGLAB (1-888-478-4522) (toll free in USA), or 1(312) 455-8498 (outside USA)

E: proteintech@ptglab.com
W: ptglab.com

This product is exclusively available under Proteintech Group brand and is not available to purchase from any other manufacturer.

Selected Validation Data



Various lysates were subjected to SDS PAGE followed by western blot with 15634-1-AP (AP2S1 antibody) at dilution of 1:8000 incubated at room temperature for 1.5 hours.