

For Research Use Only

# SH2D3A Polyclonal antibody, PBS Only

Catalog Number: 15641-1-PBS



## Basic Information

|   |   |  |
|---|---|--|
| <b>Catalog Number:</b><br>15641-1-PBS                       | <b>GenBank Accession Number:</b><br>BC006281  | <b>Purification Method:</b><br>Antigen affinity purification |
| <b>Size:</b><br>100ug , Concentration: 1 mg/ml by Nanodrop; | <b>GeneID (NCBI):</b><br>10045                |  |
| <b>Source:</b><br>Rabbit                                    | <b>UNIPROT ID:</b><br>Q9BRG2                  |  |
| <b>Isotype:</b><br>IgG                                      | <b>Full Name:</b><br>SH2 domain containing 3A |  |
| <b>Immunogen Catalog Number:</b><br>AG8132                  | <b>Calculated MW:</b><br>576 aa, 63 kDa       |  |
|   | <b>Observed MW:</b><br>64 kDa                 |  |

## Applications

**Tested Applications:**  
WB, IHC, IF/ICC, Indirect ELISA

**Species Specificity:**  
human

## Background Information

SH2 domain containing 3A (SH2D3A) is a novel SH2-containing protein 1 (NSP1) with proline-rich domains and therefore probably involved in the signal-transduction of some ligand-activated tyrosine kinase receptors. Three phosphorylation sites of NSP1 have been found to date. NSP1 may be located at cell membrane play a role in JNK activation.

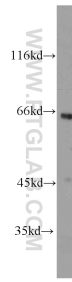
## Storage

**Storage:**  
Store at -80°C.  
**Storage Buffer:**  
PBS Only

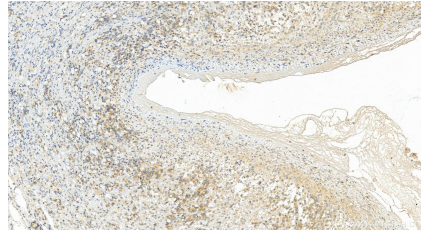
For technical support and original validation data for this product please contact:  
T: 1 (888) 4PTGLAB (1-888-478-4522) (toll free in USA), or 1(312) 455-8498 (outside USA)      E: proteintech@ptglab.com  
W: ptglab.com

This product is exclusively available under Proteintech Group brand and is not available to purchase from any other manufacturer.

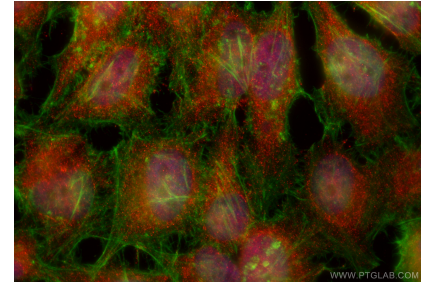
## Selected Validation Data



HeLa cells were subjected to SDS PAGE followed by western blot with 15641-1-AP (SH2D3A antibody) at dilution of 1:1000 incubated at room temperature for 1.5 hours. This data was developed using the same antibody clone with 15641-1-PBS in a different storage buffer formulation.



Immunohistochemical analysis of paraffin-embedded human ovary cancer tissue slide using 15641-1-AP (SH2D3A antibody) at dilution of 1:400 (under 20x lens). Heat mediated antigen retrieval with Tris-EDTA buffer (pH 9.0). This data was developed using the same antibody clone with 15641-1-PBS in a different storage buffer formulation.



Immunofluorescent analysis of (4% PFA) fixed HeLa cells using SH2D3A antibody (15641-1-AP) at dilution of 1:200 and CoraLite®594-Conjugated Goat Anti-Rabbit IgG(H+L) (SA00013-4), CL488-Phalloidin (green). This data was developed using the same antibody clone with 15641-1-PBS in a different storage buffer formulation.