

For Research Use Only

# POM121 Polyclonal antibody, PBS Only

Catalog Number: 15645-1-PBS

Featured Product



## Basic Information

**Catalog Number:**

15645-1-PBS

**Size:**

100ug, Concentration: 1 mg/ml by Nanodrop;

**Source:**

Rabbit

**Isotype:**

IgG

**Immunogen Catalog Number:**

AG8177

**GenBank Accession Number:**

BC008794

**GeneID (NCBI):**

9883

**UNIPROT ID:**

Q96HA1

**Full Name:**

POM121 membrane glycoprotein (rat)

**Calculated MW:**

984 aa, 99 kDa

**Observed MW:**

140-150 kDa

**Purification Method:**

Antigen affinity purification

## Applications

**Tested Applications:**

WB, IHC, IF/ICC, IF-P, Indirect ELISA

**Species Specificity:**

human, mouse, rat

## Background Information

POM121 is an integral membrane protein that localizes to the central spoke ring complex and participates in anchoring the nuclear pore complex to the nuclear envelope. Catalog# 15645-1-AP do well in identifying the nuclear envelope in immunofluorescence experiments.

## Storage

**Storage:**

Store at -80°C.

**Storage Buffer:**

PBS Only

For technical support and original validation data for this product please contact:

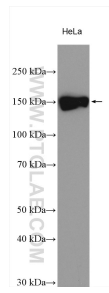
T: 1 (888) 4PTGLAB (1-888-478-4522) (toll free in USA), or 1(312) 455-8498 (outside USA)

E: [proteintech@ptglab.com](mailto:proteintech@ptglab.com)

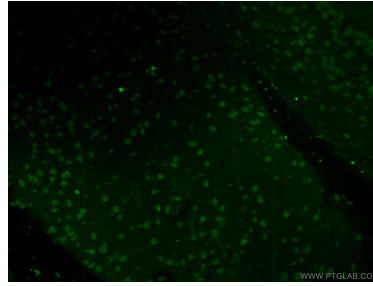
W: [ptglab.com](http://ptglab.com)

This product is exclusively available under Proteintech Group brand and is not available to purchase from any other manufacturer.

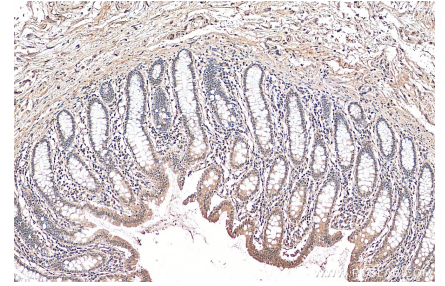
## Selected Validation Data



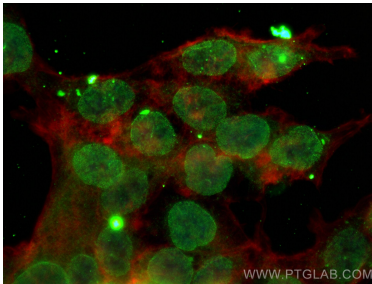
HeLa cells were subjected to SDS PAGE followed by western blot with 15645-1-AP (POM121 antibody) at dilution of 1:2000 incubated at room temperature for 1.5 hours. This data was developed using the same antibody clone with 15645-1-PBS in a different storage buffer formulation.



Immunofluorescent analysis of (4% PFA) fixed mouse brain tissue using 15645-1-AP (POM121 antibody) at dilution of 1:200 and Alexa Fluor 488-Conjugated AffiniPure Goat Anti-Rabbit IgG(H+L). This data was developed using the same antibody clone with 15645-1-PBS in a different storage buffer formulation.



Immunohistochemical analysis of paraffin-embedded human colon tissue slide using 15645-1-AP (POM121 antibody) at dilution of 1:200 (under 10x lens). Heat mediated antigen retrieval with Tris-EDTA buffer (pH 9.0). This data was developed using the same antibody clone with 15645-1-PBS in a different storage buffer formulation.



Immunofluorescent analysis of (4% PFA) fixed HCT 116 cells using POM121 antibody (15645-1-AP) at dilution of 1:400 and Coralite@488-Conjugated AffiniPure Goat Anti-Rabbit IgG(H+L) (SA00013-2), CL594-Phalloidin (red). This data was developed using the same antibody clone with 15645-1-PBS in a different storage buffer formulation.