

For Research Use Only

# MTO1 Polyclonal antibody

Catalog Number: 15650-1-AP

Featured Product

11 Publications



## Basic Information

### Catalog Number:

15650-1-AP

### Size:

150ul, Concentration: 350 ug/ml by Nanodrop and 200 ug/ml by Bradford method using BSA as the standard;

### Source:

Rabbit

### Isotype:

IgG

### Immunogen Catalog Number:

AG8192

### GenBank Accession Number:

BC005808

### GeneID (NCBI):

25821

### UNIPROT ID:

Q9Y2Z2

### Full Name:

mitochondrial translation optimization 1 homolog (S. cerevisiae)

### Calculated MW:

717 aa, 80 kDa

### Observed MW:

70-75 kDa

### Purification Method:

Antigen affinity purification

### Recommended Dilutions:

WB 1:500-1:2000

IF/ICC 1:50-1:500

## Applications

### Tested Applications:

WB, IF/ICC, ELISA

### Cited Applications:

WB, ColP

### Species Specificity:

human

### Cited Species:

human

### Positive Controls:

WB : MCF-7 cells, human liver tissue

IF/ICC : MCF-7 cells,

## Notable Publications

Author	Pubmed ID	Journal	Application
Uwe Richter	30262910	Nat Commun	WB
Laura S Kremer	27151179	J Hepatol	WB
Boczonadi Veronika V	23814040	Hum Mol Genet	WB

## Storage

### Storage:

Store at -20°C. Stable for one year after shipment.

### Storage Buffer:

PBS with 0.02% sodium azide and 50% glycerol pH 7.3.

Aliquoting is unnecessary for -20°C storage

\*\*\* 20ul sizes contain 0.1% BSA

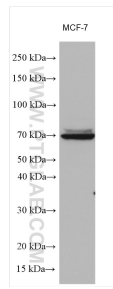
For technical support and original validation data for this product please contact:

T: 1 (888) 4PTGLAB (1-888-478-4522) (toll free in USA), or 1(312) 455-8498 (outside USA)

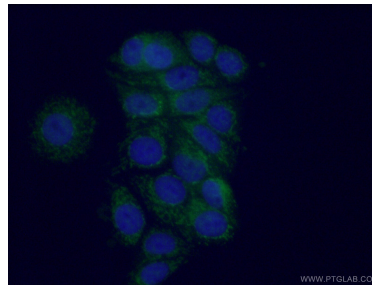
E: [proteintech@ptglab.com](mailto:proteintech@ptglab.com)  
W: [ptglab.com](http://ptglab.com)

This product is exclusively available under Proteintech Group brand and is not available to purchase from any other manufacturer.

## Selected Validation Data



MCF-7 cells were subjected to SDS PAGE followed by western blot with 15650-1-AP (MTO1 antibody) at dilution of 1:1000 incubated at room temperature for 1.5 hours.



Immunofluorescent analysis of (4% PFA) fixed MCF-7 cells using 15650-1-AP (MTO1 antibody) at dilution of 1:50 and Alexa Fluor 488-conjugated AffiniPure Goat Anti-Rabbit IgG(H+L).