

For Research Use Only

PFKL Polyclonal antibody

Catalog Number: 15652-1-AP **7 Publications**



Basic Information

Catalog Number: 15652-1-AP	GenBank Accession Number: BC008964	Purification Method: Antigen affinity purification
Size: 150ul , Concentration: 173 µg/ml by Bradford method using BSA as the standard;	GeneID (NCBI): 5211	Recommended Dilutions: WB 1:500-1:1000 IHC 1:20-1:200
Source: Rabbit	Full Name: phosphofructokinase, liver	
Isotype: IgG	Calculated MW: 85 kDa	
Immunogen Catalog Number: AG8250	Observed MW: 85 kDa	

Applications

Tested Applications: IHC, WB, ELISA	Positive Controls: WB : HeLa cells, IHC : human liver cancer tissue,
Cited Applications: WB	
Species Specificity: human, mouse, rat	
Cited Species: human, mouse	
Note-IHC: suggested antigen retrieval with TE buffer pH 9.0; (*) Alternatively, antigen retrieval may be performed with citrate buffer pH 6.0	

Background Information

PFKL(6-phosphofructokinase, liver type) is also named as PFK-B and belongs to the phosphofructokinase family. The PFKL gene encodes the liver isoform of phosphofructokinase (PFK)(ATP:D-fructose-6-phosphate-1-phosphotransferase). PFK catalyzes the irreversible conversion of fructose-6-phosphate to fructose-1,6-bisphosphate and is a key regulatory enzyme in glycolysis. In human beings, PFK exists as a system of three of subunits: these are the muscle(PFKM), liver(PFKL), and platelet(PFKP) PFKs(PMID: 2139864). It has 2 isoforms produced by alternative splicing.

Notable Publications

Author	Pubmed ID	Journal	Application
Xiao Li	29845188	Int J Oncol	WB
Jun Wang	27049827	Oncotarget	WB
Xiuying Zhong	28325773	EMBO Rep	WB

Storage

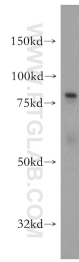
Storage:
Store at -20°C. Stable for one year after shipment.
Storage Buffer:
PBS with 0.02% sodium azide and 50% glycerol pH 7.3.
Aliquoting is unnecessary for -20°C storage

*** 20ul sizes contain 0.1% BSA

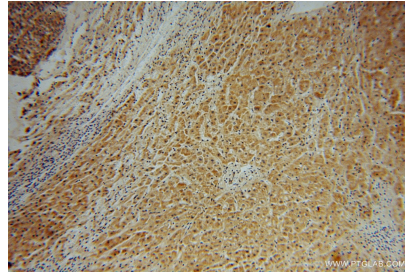
For technical support and original validation data for this product please contact:
T: 1 (888) 4PTGLAB (1-888-478-4522) (toll free in USA), or 1(312) 455-8498 (outside USA)
E: proteintech@ptglab.com
W: ptglab.com

This product is exclusively available under Proteintech Group brand and is not available to purchase from any other manufacturer.

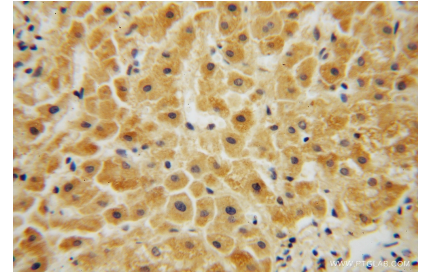
Selected Validation Data



HeLa cells were subjected to SDS PAGE followed by western blot with 15652-1-AP (PFKL antibody) at dilution of 1:500 incubated at room temperature for 1.5 hours.



Immunohistochemical analysis of paraffin-embedded human liver cancer using 15652-1-AP (PFKL antibody) at dilution of 1:50 (under 10x lens).



Immunohistochemical analysis of paraffin-embedded human liver cancer using 15652-1-AP (PFKL antibody) at dilution of 1:50 (under 40x lens).