

For Research Use Only

# XPNPEP3 Polyclonal antibody

Catalog Number: 15655-1-AP



## Basic Information

### Catalog Number:

15655-1-AP

### Size:

150ul, Concentration: 500 ug/ml by Nanodrop and 147 ug/ml by Bradford method using BSA as the standard;

### Source:

Rabbit

### Isotype:

IgG

### Immunogen Catalog Number:

AG8007

### GenBank Accession Number:

BC004989

### GeneID (NCBI):

63929

### UNIPROT ID:

Q9NQH7

### Full Name:

X-prolyl aminopeptidase (aminopeptidase P) 3, putative

### Calculated MW:

57 kDa

### Observed MW:

57 kDa

### Purification Method:

Antigen affinity purification

### Recommended Dilutions:

WB 1:1000-1:8000

IP 0.5-4.0 ug for 1.0-3.0 mg of total protein lysate

IHC 1:50-1:500

## Applications

### Tested Applications:

WB, IHC, IP, ELISA

### Species Specificity:

human, mouse, rat

**Note-IHC: suggested antigen retrieval with TE buffer pH 9.0; (\*) Alternatively, antigen retrieval may be performed with citrate buffer pH 6.0**

### Positive Controls:

**WB:** A431 cells, human testis tissue, human spleen tissue, PC-3 cells, 4T1 cells, mouse liver

**IP:** PC-3 cells,

**IHC:** mouse liver tissue, human oesophagus tissue

## Background Information

XPNPEP3 gene encodes X-prolyl aminopeptidase 3 which functions to remove the penultimate N-terminal Proline residue from nascent proteins and appears to play a role in ciliary function. CRC tissue microarray revealed increased XPNPEP3 expression in tumor compared to matched normal samples (PMID:29383790). Other study found that XPNPEP3 localizes to mitochondria in renal cells in vitro and to kidney tubules in a cell type-specific pattern, and mutations in the gene are associated with NPHP-like disorder (PMID:20179356).

## Storage

### Storage:

Store at -20°C. Stable for one year after shipment.

### Storage Buffer:

PBS with 0.02% sodium azide and 50% glycerol pH 7.3.

Aliquoting is unnecessary for -20°C storage

\*\*\* 20ul sizes contain 0.1% BSA

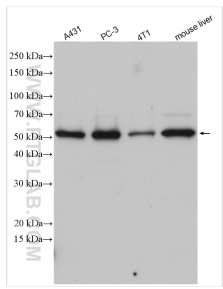
For technical support and original validation data for this product please contact:

T: 1 (888) 4PTGLAB (1-888-478-4522) (toll free in USA), or 1(312) 455-8498 (outside USA)

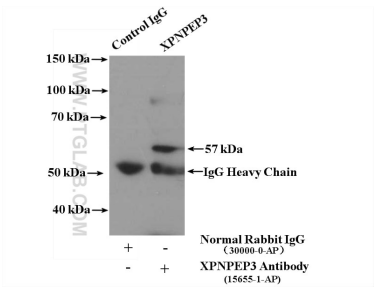
E: [proteintech@ptglab.com](mailto:proteintech@ptglab.com)  
W: [ptglab.com](http://ptglab.com)

This product is exclusively available under Proteintech Group brand and is not available to purchase from any other manufacturer.

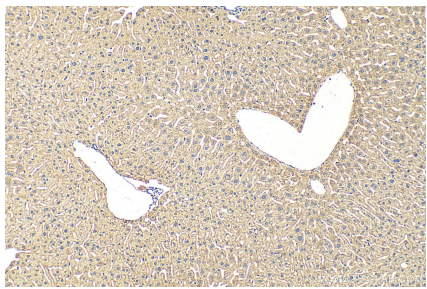
Selected Validation Data



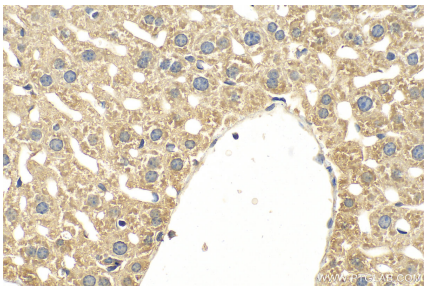
Various lysates were subjected to SDS PAGE followed by western blot with 15655-1-AP (XPNPEP3 antibody) at dilution of 1:4000 incubated at room temperature for 1.5 hours.



IP result of anti-XPNPEP3 (IP:15655-1-AP, 4ug; Detection:15655-1-AP 1:400) with PC-3 cells lysate 2000ug.



Immunohistochemical analysis of paraffin-embedded mouse liver tissue slide using 15655-1-AP (XPNPEP3 antibody) at dilution of 1:100 (under 10x lens). Heat mediated antigen retrieval with Tris-EDTA buffer (pH 9.0).



Immunohistochemical analysis of paraffin-embedded mouse liver tissue slide using 15655-1-AP (XPNPEP3 antibody) at dilution of 1:100 (under 40x lens). Heat mediated antigen retrieval with Tris-EDTA buffer (pH 9.0).