

For Research Use Only

PIWIL1 Polyclonal antibody

Catalog Number: 15659-1-AP **7 Publications**



Basic Information

Catalog Number: 15659-1-AP	GenBank Accession Number: BC028581	Purification Method: Antigen affinity purification
Size: 150ul, Concentration: 500 µg/ml by Nanodrop and 187 µg/ml by Bradford method using BSA as the standard;	GeneID (NCBI): 9271	Recommended Dilutions: WB 1:500-1:1000 IP 0.5-4.0 ug for IP and 1:500-1:1000 for WB
Source: Rabbit	Full Name: piwi-like 1 (Drosophila)	IHC 1:20-1:200 IF 1:20-1:200
Isotype: IgG	Calculated MW: 99 kDa	
Immunogen Catalog Number: AG8056	Observed MW: 85-95 kDa	

Applications

Tested Applications: IF, IHC, IP, WB, ELISA	Positive Controls:
Cited Applications: IF, IP, WB	WB: human testis tissue, mouse testis tissue
Species Specificity: human, mouse	IP: mouse testis tissue,
Cited Species: chicken, human, mouse	IHC: human testis tissue, human liver cancer tissue, human prostate cancer tissue
Note-IHC: suggested antigen retrieval with TE buffer pH 9.0 ; (*) Alternatively, antigen retrieval may be performed with citrate buffer pH 6.0	IF: HepG2 cells,

Background Information

Notable Publications

Author	Pubmed ID	Journal	Application
Bethany Baumann	30905091	Prostate	IF
Yi-Ting Cai	34143903	Andrologia	WB
Qi Xie	35093098	J Transl Med	WB

Storage

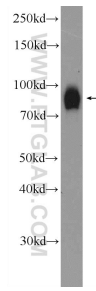
Storage:
Store at -20°C. Stable for one year after shipment.
Storage Buffer:
PBS with 0.02% sodium azide and 50% glycerol pH 7.3.
Aliquoting is unnecessary for -20°C storage

*** 20ul sizes contain 0.1% BSA

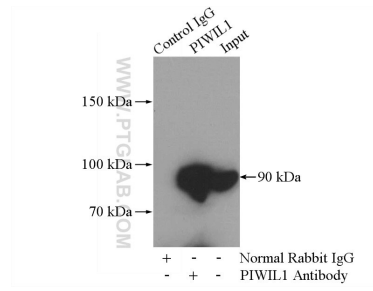
For technical support and original validation data for this product please contact:
T: 1 (888) 4PTGLAB (1-888-478-4522) (toll free in USA), or 1(312) 455-8498 (outside USA)
E: proteintech@ptglab.com
W: ptglab.com

This product is exclusively available under Proteintech Group brand and is not available to purchase from any other manufacturer.

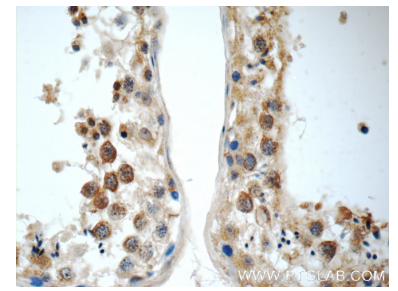
Selected Validation Data



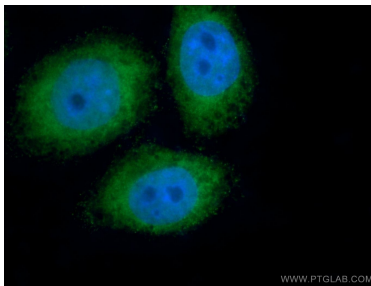
human testis tissue were subjected to SDS PAGE followed by western blot with 15659-1-AP (PIWIL1 Antibody) at dilution of 1:600 incubated at room temperature for 1.5 hours.



IP Result of anti-PIWIL1 (IP:15659-1-AP, 4ug; Detection:15659-1-AP 1:500) with mouse testis tissue lysate 2400ug.



Immunohistochemical analysis of paraffin-embedded human testis tissue slide using 15659-1-AP (PIWIL1 Antibody) at dilution of 1:50 (under 40x lens).



Immunofluorescent analysis of HepG2 cells using 15659-1-AP (PIWIL1 antibody) at dilution of 1:50 and Alexa Fluor 488-conjugated AffiniPure Goat Anti-Rabbit IgG(H+L).