

For Research Use Only

CADM3 Polyclonal antibody

Catalog Number: 15660-1-AP



Basic Information

Catalog Number: 15660-1-AP	GenBank Accession Number: BC033819	Purification Method: Antigen affinity purification
Size: 150ul , Concentration: 700 µg/ml by Nanodrop and 327 µg/ml by Bradford method using BSA as the standard;	GeneID (NCBI): 57863	Recommended Dilutions: WB 1:500-1:2000
Source: Rabbit	Full Name: cell adhesion molecule 3	
Isotype: IgG	Calculated MW: 43 kDa	
Immunogen Catalog Number: AG8081	Observed MW: 38-50 kDa	

Applications

Tested Applications: FC, WB, ELISA	Positive Controls:
Species Specificity: human, mouse, rat	WB : mouse brain tissue, Jurkat cells, SH-SY5Y cells, mouse cerebellum tissue, rat brain tissue

Background Information

CADM3, also known as IGSF4B or TSL1, is a transmembrane protein that is involved in the cell-cell adhesion. CADM3 is mainly expressed in the nervous system and plays a role in the formation of synapses, axon bundles, myelinated axons and cerebellar morphogenesis (PMID: 18420026).

Storage

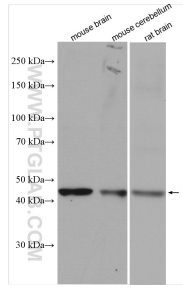
Storage:
Store at -20°C. Stable for one year after shipment.
Storage Buffer:
PBS with 0.02% sodium azide and 50% glycerol pH 7.3.
Aliquoting is unnecessary for -20°C storage

***** 20ul sizes contain 0.1% BSA**

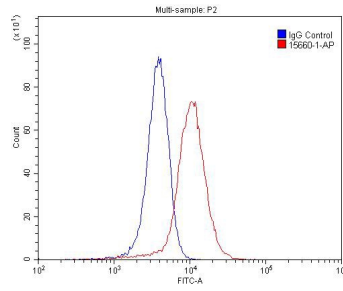
For technical support and original validation data for this product please contact:
T: 1 (888) 4PTGLAB (1-888-478-4522) (toll free in USA), or 1(312) 455-8498 (outside USA) E: proteintech@ptglab.com W: ptglab.com

This product is exclusively available under Proteintech Group brand and is not available to purchase from any other manufacturer.

Selected Validation Data



Various lysates were subjected to SDS PAGE followed by western blot with 15660-1-AP (CADM3 antibody) at dilution of 1:1000 incubated at room temperature for 1.5 hours.



1×10^6 SH-SY5Y cells were stained with 0.2ug CADM3 antibody (15660-1-AP, red) and control antibody (blue). Fixed with 4% PFA blocked with 3% BSA (30 min). Alexa Fluor 488-conjugated AffiniPure Goat Anti-Rabbit IgG(H+L) with dilution 1:1500.