

For Research Use Only

# Islet 1 Polyclonal antibody

Catalog Number: 15661-1-AP **3 Publications**



## Basic Information

<b>Catalog Number:</b> 15661-1-AP	<b>GenBank Accession Number:</b> BC031213	<b>Purification Method:</b> Antigen affinity purification
<b>Size:</b> 150ul , Concentration: 800 µg/ml by Nanodrop and 287 µg/ml by Bradford method using BSA as the standard;	<b>GeneID (NCBI):</b> 3670	<b>Recommended Dilutions:</b> WB 1:500-1:2400 IP 0.5-4.0 ug for IP and 1:500-1:1000 for WB
<b>Source:</b> Rabbit	<b>Full Name:</b> ISL LIM homeobox 1	<b>IHC 1:20-1:200</b> <b>IF 1:50-1:500</b>
<b>Isotype:</b> IgG	<b>Calculated MW:</b> 39 kDa	
<b>Immunogen Catalog Number:</b> AG8088	<b>Observed MW:</b> 39 kDa, 45 kDa	

## Applications

<b>Tested Applications:</b> FC, IF, IHC, IP, WB, ELISA	<b>Positive Controls:</b> WB : BxPC-3 cells, HeLa cells
<b>Cited Applications:</b> IF	<b>IP :</b> HeLa cells,
<b>Species Specificity:</b> human	<b>IHC :</b> human pancreas cancer tissue, human pancreas tissue
<b>Cited Species:</b> human	<b>IF :</b> SH-SY5Y cells,

**Note-IHC: suggested antigen retrieval with TE buffer pH 9.0; (\*) Alternatively, antigen retrieval may be performed with citrate buffer pH 6.0**

## Background Information

ISL1 belongs to the LIM homeodomain transcription factor family that binds to the enhancer region of the INS gene. It plays a pivotal role in cardiogenesis, and lacking ISL1 expression results in growth arrest or displays profound defects in heart development, including atria, ventricle, and the inflow and outflow tracts.

## Notable Publications

Author	Pubmed ID	Journal	Application
Fangkun Liu	30599272	Neuroscience	IF
Daniel Kulick	36511510	ACS Chem Neurosci	
Jing Huang	29270148	Front Neurol	IF

## Storage

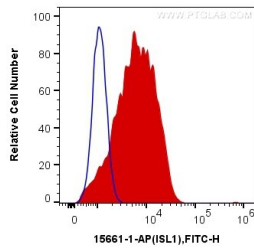
**Storage:**  
Store at -20°C. Stable for one year after shipment.  
**Storage Buffer:**  
PBS with 0.02% sodium azide and 50% glycerol pH 7.3.  
Aliquoting is unnecessary for -20°C storage

\*\*\* 20ul sizes contain 0.1% BSA

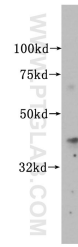
For technical support and original validation data for this product please contact:  
T: 1 (888) 4PTGLAB (1-888-478-4522) (toll free in USA), or 1(312) 455-8498 (outside USA)  
E: proteintech@ptglab.com  
W: ptglab.com

This product is exclusively available under Proteintech Group brand and is not available to purchase from any other manufacturer.

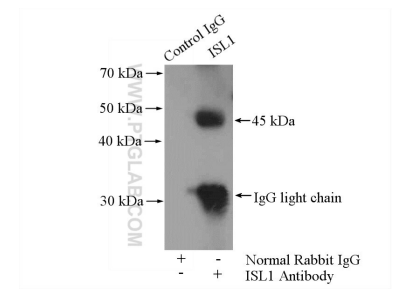
## Selected Validation Data



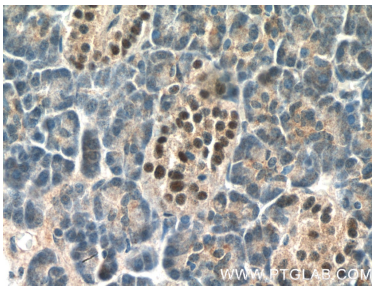
1X10<sup>6</sup> SH-SY5Y cells were intracellularly stained with 0.2 ug Anti-Human Islet 1 (15661-1-AP) and CoraLite®488-Conjugated AffiniPure Goat Anti-Rabbit IgG(H+L) at dilution 1:1000 (red), or 0.2 ug Control Antibody. Cells were fixed with 4% PFA and permeabilized with 0.1% TritonX-100.



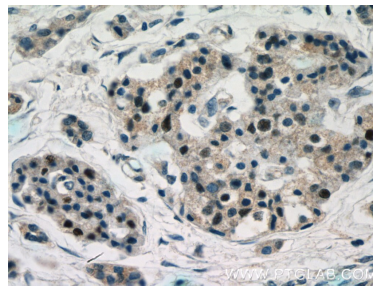
BxPC-3 cells were subjected to SDS PAGE followed by western blot with 15661-1-AP (ISL1 antibody) at dilution of 1:500 incubated at room temperature for 1.5 hours.



IP Result of anti-Islet 1 (IP:15661-1-AP, 4ug; Detection:15661-1-AP 1:500) with HeLa cells lysate 2000ug.



Immunohistochemical analysis of paraffin-embedded human pancreas tissue slide using 15661-1-AP (Islet 1 Antibody) at dilution of 1:200 (under 40x lens).



Immunohistochemical analysis of paraffin-embedded human pancreas cancer tissue slide using 15661-1-AP (Islet 1 Antibody) at dilution of 1:200 (under 40x lens).



Immunofluorescent analysis of (4% PFA) fixed SH-SY5Y cells using Islet 1 antibody (15661-1-AP) at dilution of 1:200 and CoraLite®488-Conjugated AffiniPure Goat Anti-Rabbit IgG(H+L).